



Infrared Gas Detector

Xgard IR

Xgard IR is an explosion-proof gas detector which uses a dual-wavelength infrared sensor to provide highly dependable detection of hazardous gases and vapours. Xgard IR delivers many advantages of IR technology in an affordable package:

- Fail safe sensor technology
- Immune to poisoning
- No damage by over-gassing
- Fast response
- Does not need oxygen to work

Xgard IR, the gas detector you can trust.

Low cost of ownership

- > 5 year sensor life
- Low maintenance requirement
- Simple parts replacement
- Lowest power consumption in class (half the consumption of catalytic beads)

Rugged and reliable

- Corrosion resistant aluminium or 316 stainless steel construction
- IP65 ingress protection
- Long-life tungsten IR lamp
- Full temperature compensation
- Accessories available for wet environments
- 2-year warranty

Choice of sensors

- Hydrocarbon for detecting HC gases in flammable concentrations.
- Carbon Dioxide for CO₂ detection in toxic concentrations.

Highly versatile

- Industry standard 4-20mA output
- Compatible with virtually any control system
- ATEX, UL and IECEx hazardous area approvals ensure global acceptance

Specifications

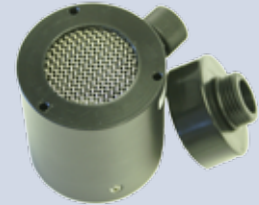
Accessories

Enclosure material	Corrosion resistant Aluminium or 316 stainless steel
Size	156h x 166w x 111d mm (6.1 x 6.5 x 4.3 inches)
Weight	1Kg (2.2lbs) Aluminium, 3.1Kg (6.8lbs) Stainless Steel
Ingress Protection	IP65, IP66 with weatherproof cap
Cable Entries	1 x M20 or 1/2"NPT on right-side
Power	10-30Vdc. 50mA at 24Vdc, 67mA at 10Vdc
Operating Temperature	-20°C to +55°C (-4°F to +131°F)
Humidity	0 to 95% RH non-condensing
Electrical Output	3-wire 4-20mA (current sink or source)
Terminals	Suitable for up to 2.5mm ² cable
Sensor Type	Infrared
Repeatability	+/- 2% FSD*
Zero Drift	+/- 2% FSD/month*
Response time	T90 <30 secs.*
Hazardous area zones	Zone 1 or Zone 2, Zone 21/22
Approvals	II 2 GD Exd IIC T6 (Tamb to +50°C) II 2 GD Exd IIC T4 (Tamb to +80°C) UL Class 1 Div. 1 Groups B,C,D IECEX MED Marine (96/98/EC) (PENDING)
EMC compliance	EN 50270, FCC Part 15 ICES-003
Performance	EN 61779:2000 EN 50271:2001

*As tested in Crowcon laboratories



Sun Shield



Spray deflector
For outdoor use and protection against wash-down operations



Flow adaptor
For use in sampling applications



Weatherproof cap
For use in very wet conditions, such as offshore installations and ships

Gas Type	LTEL LEL (% vol)	STEL UEL (% vol)	Ranges Available
Carbon Dioxide (CO ₂)	0.5% vol.	1.5% vol.	0-2 or 0-5%
Ethylene (C ₂ H ₄)	2.7 (2.3)	36 (36)	0-100% lel
Methane (CH ₄)	5 (4.4)	15 (17)	0-100% lel
Propane (C ₃ H ₈)	2.2 (1.7)	10 (10.9)	0-100% lel
Butane (C ₄ H ₁₀)	1.8 (1.4)	9 (9.3)	0-100% lel
Ethanol (C ₂ H ₅ OH)	3.3 (3.1)	19 (19)	0-100% lel
Hexane (C ₆ H ₁₄)	1.2 (1)	7.4 (8.4)	0-100% lel
LPG	2	10	0-100% lel
Pentane (C ₅ H ₁₂)	1.5 (1.4)	8 (7.8)	0-100% lel

LEL figures shown in brackets are taken from EN 61779 Part 1:2000



Collector cone
For aiding detection of gases which are lighter than air, (eg Methane)



A HALMA COMPANY

P03020 Issue 6 March 09

UK Office
Crowcon Detection Instruments Ltd
2 Blacklands Way
Abingdon Business Park
Abingdon
Oxfordshire OX14 1DY
United Kingdom
Tel: +44 (0) 1235 557700
Fax: +44 (0) 1235 557749
Email: sales@crowcon.com
Web Site: www.crowcon.com

USA Office
Crowcon Detection Instruments Ltd
21 Kenton Lands Road
Erlanger
Kentucky 41018-1845
USA
Tel: +1 859 957 1039 or
1-800-5-CROWCON
Fax: +1 859 957 1044
Email: salesusa@crowcon.com
Web Site: www.crowcon.us

Rotterdam Office
Crowcon Detection Instruments Ltd
Vlambloem 129
3068JG, Rotterdam
Netherlands
Tel: +31 10 421 1232
Fax: +31 10 421 0542
Email: eu@crowcon.com
Web Site: www.crowcon.com

Singapore Office
Crowcon Detection Instruments Ltd
Block 194 Pandan Loop
#06-20 Pantech Industrial Complex
Singapore 128383
Tel: +65 6745 2936
Fax: +65 6745 0467
Email: sales@crowcon.com.sg
Web Site: www.crowcon.com