

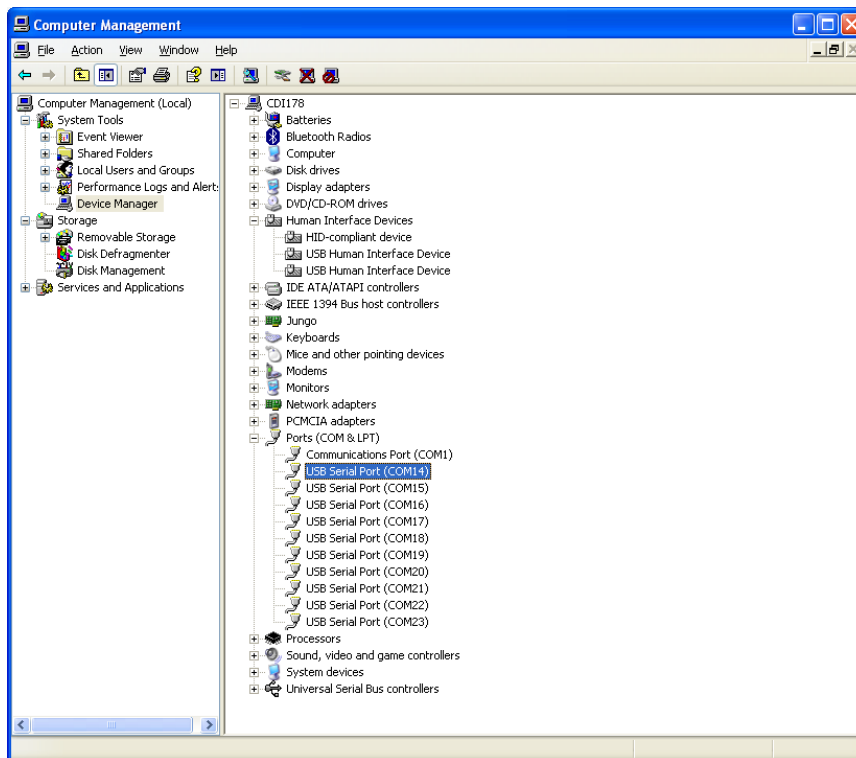
Product: Checkbox IMH
Subject: USB Drivers (Windows XP)

The USB connection between a Checkbox IMH and a PC is not automatically recognised by Microsoft Windows and often results in the USB drivers not being installed correctly.

In order to correct this and enable communication between the PC and Checkbox, the drivers need to be 'updated' to the correct ones.

Firstly, to perform the following actions, you **must have Admin Rights on your PC.**

To confirm if the drivers need to be updated, you must open the "Device Manager" (see page 2 of this document) to view whether the drivers have been installed correctly – ten "USB Serial Port" entries in the "Ports (COM & LPT)" section, with a separate COM port number assigned to each one should exist (see Fig-1).

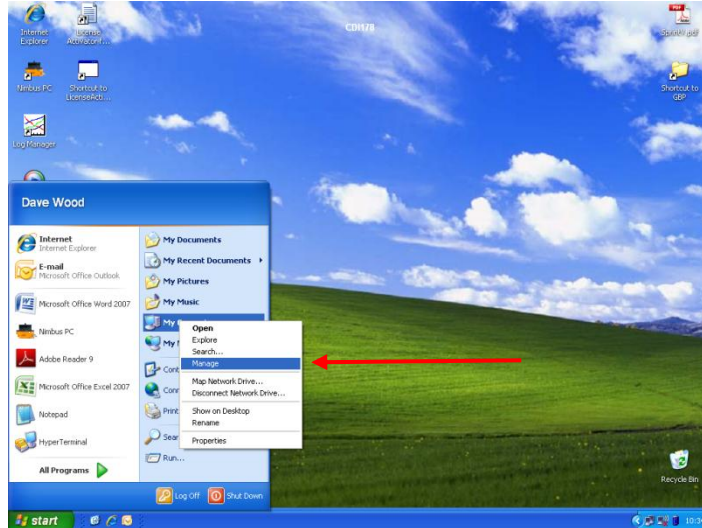


(Fig-1) Correct installation of Checkbox USB Drivers

To open Device Manager

Click on the “**Start**” button, hover the mouse over the “**My Computer**” icon and click the Right Hand Mouse button.

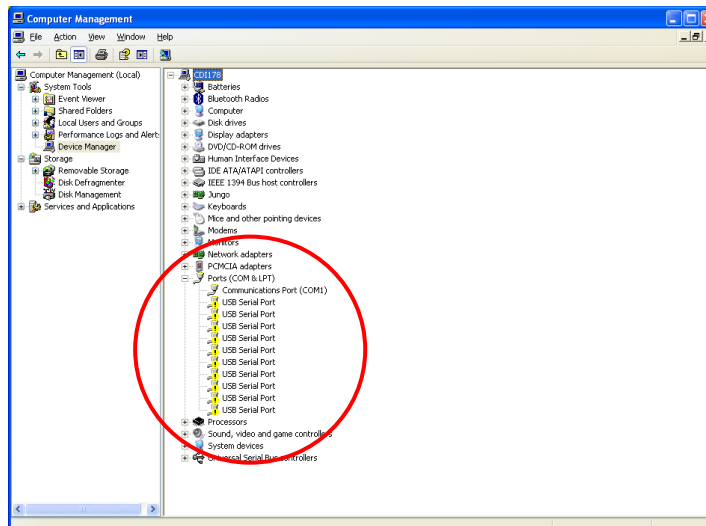
From the drop-down menu, Left Click on “**Manage**” (see Fig-2).



(Fig-2)

A **Computer Management** window will open. Click on **Device Manager** to view the devices connected to the PC (**Note: if the checkbox is not connected to the PC & powered on, you will not see the drivers listed in Device Manager**).

Any incorrectly installed devices will be shown with a yellow icon next to the device. (see Fig-3). If this is the case, you will need to install the correct device driver as per the instructions (*beginning on page 3 of this document*).



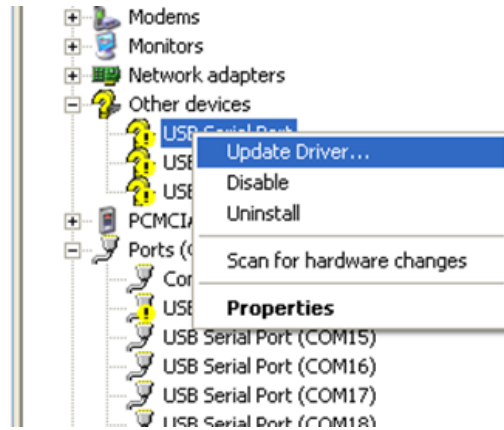
(Fig-3)

To Install the correct Device Drivers

- 1) If you do not have the CD, download the driver from the FTDI website http://www.ftdichip.com/Drivers/CDM/CDM20814_WHQL_Certified.zip and save it to your computer. Then unzip the file to a folder on your desktop.

UNDER NO CIRCUMSTANCES AND UNDER NO LEGAL THEORY, TORT, CONTRACT, OR OTHERWISE, SHALL CROWCON OR ITS SUPPLIERS OR RESELLERS BE LIABLE TO YOU OR ANY OTHER PERSON FOR ANY INDIRECT, SPECIAL, INCIDENTAL, OR CONSEQUENTIAL DAMAGES OF ANY CHARACTER INCLUDING, WITHOUT LIMITATION, DAMAGES FOR LOSS OF GOODWILL, WORK STOPPAGE, COMPUTER FAILURE OR MALFUNCTION, OR ANY AND ALL OTHER COMMERCIAL DAMAGES OR LOSSES, OR FOR ANY DAMAGES IN EXCESS OF CROWCONS LIST PRICE FOR A LICENSE TO THE SOFTWARE AND DOCUMENTATION, EVEN IF CROWCON SHALL HAVE BEEN INFORMED OF THE POSSIBILITY OF SUCH DAMAGES, OR FOR ANY CLAIM BY ANY OTHER PARTY. THIS LIMITATION OF LIABILITY SHALL NOT APPLY TO LIABILITY FOR DEATH OR PERSONAL INJURY TO THE EXTENT APPLICABLE LAW PROHIBITS SUCH LIMITATION. FURTHERMORE, SOME JURISDICTIONS DO NOT ALLOW THE EXCLUSION OR LIMITATION OF INCIDENTAL OR CONSEQUENTIAL DAMAGES, SO THIS LIMITATION AND EXCLUSION MAY NOT APPLY TO YOU.

- 2) Right Click on the Device Driver to be updated & select “**Update Driver**” from the drop down menu.



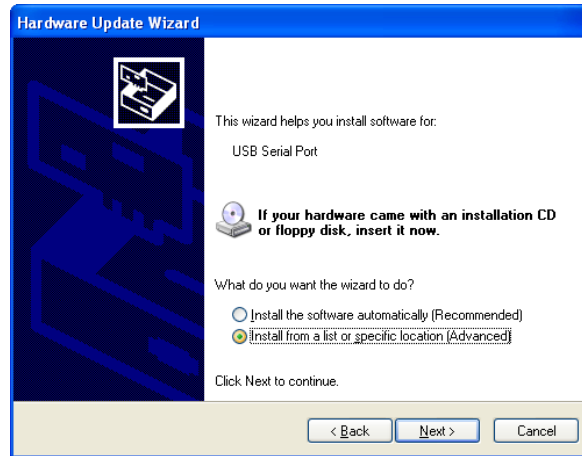
(Step 2)

- 3) Select “**No, not at this time**” and click on **Next**



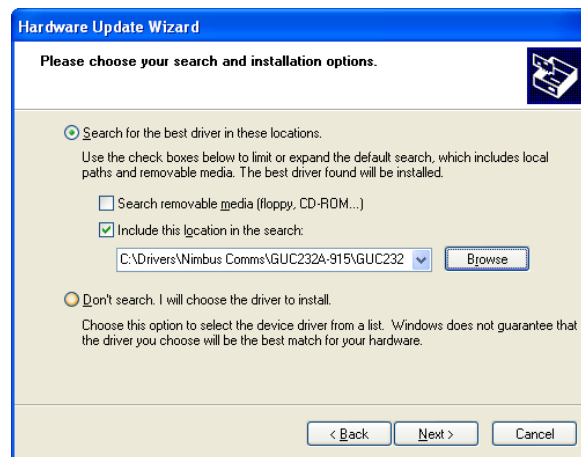
(Step 3)

- 4) Select “Install from a List or specific location (Advanced)” and click on Next



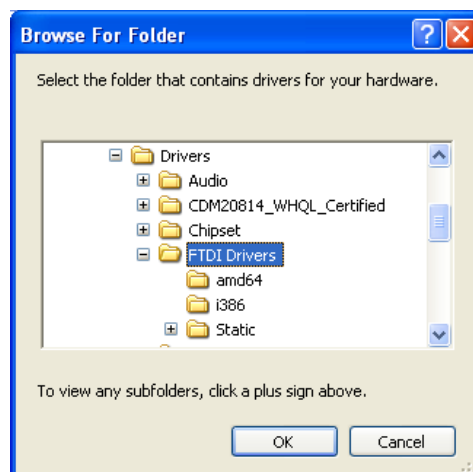
(Step 4)

- 5) Select the “Include this location in the search” option and click on Browse



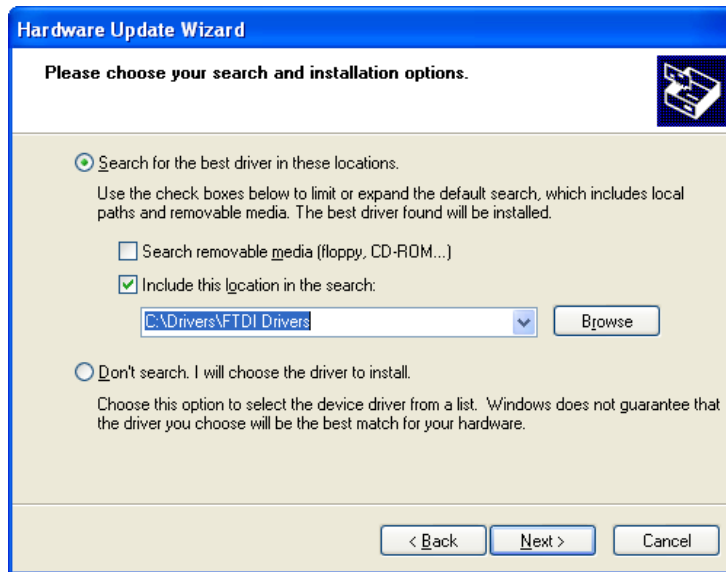
(Step 5)

- 6) Browse to the “FTDI drivers” folder on the CD, or the *folder where you unzipped the Driver Files to in step 1*, then Click OK



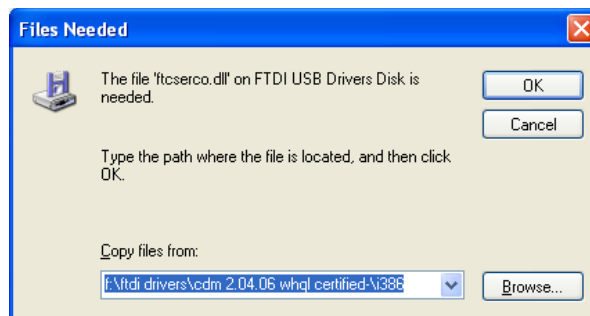
(Step 6)

7) With the correct Driver File path in the search location, click on **Next**



(Step 7)

8) If presented with the “Files Needed” window, click on **Browse** and locate *the same folder as in step 6 above*, then click on **OK**



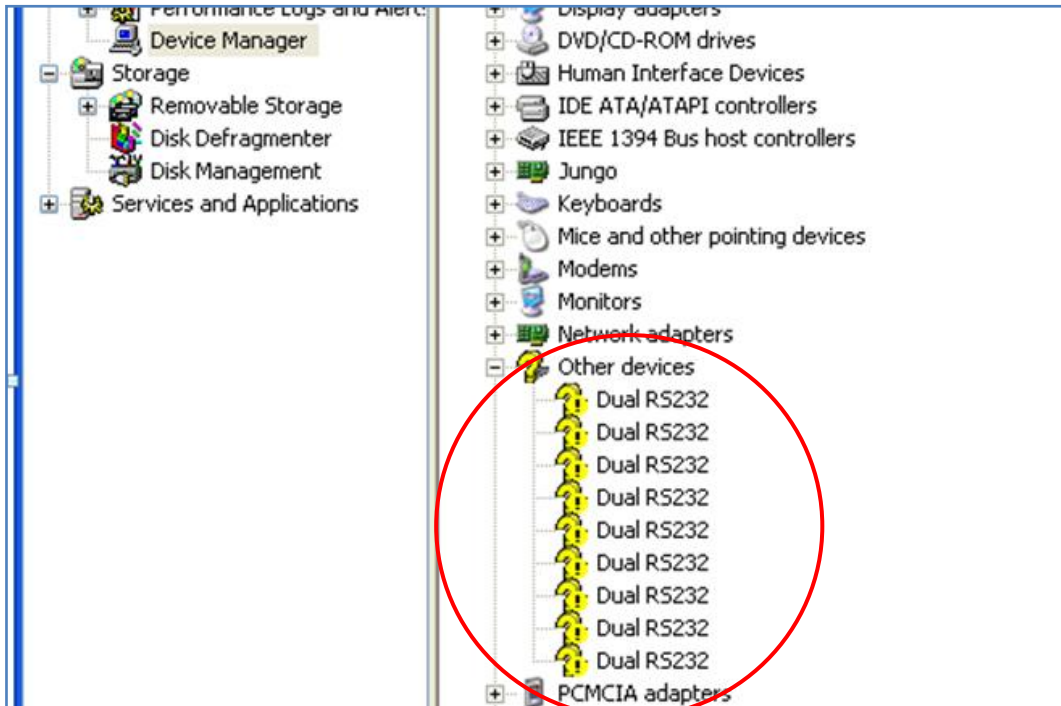
(Step 8)

9) Once the driver files have been updated, you will be presented with this window. Click **Finish** to complete the driver update.

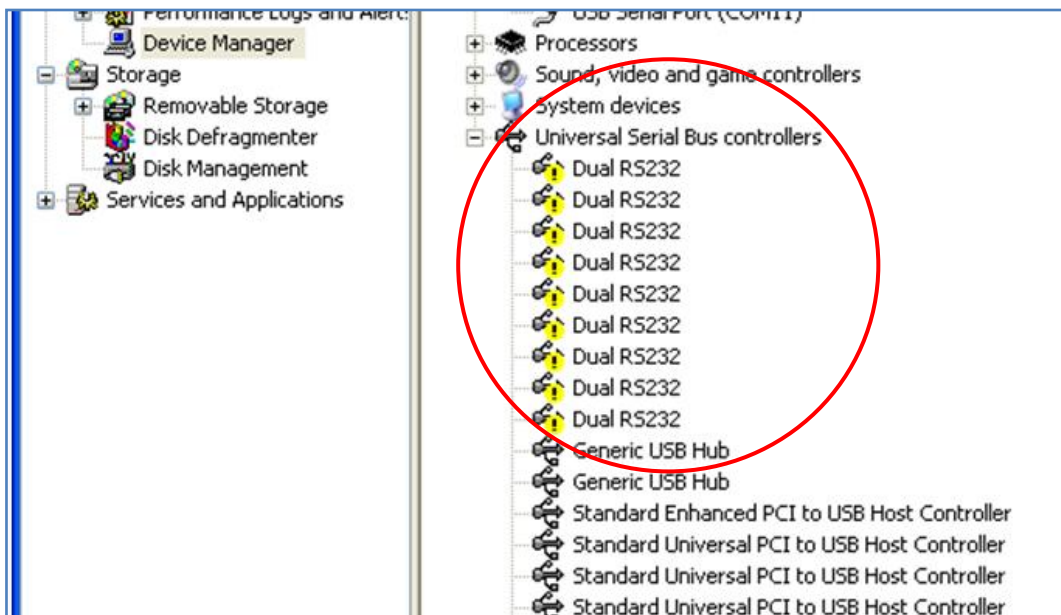


(Step 9)

- 10) Repeat **steps 2 – 9**, above, for each **USB Serial Port** until all ten ports have been updated.
- 11) In addition to the **USB Serial Ports**, there may also be some entries for **“Dual RS232”** that have not installed correctly - shown in either the **“Other Devices”** section or the **Universal Serial Bus Controllers”** section of **Device Manager** (see Fig-4 & Fig-5)
If this is the case, repeat **steps 2 – 9**, above, for each **Dual RS232** entry until they have all been updated.

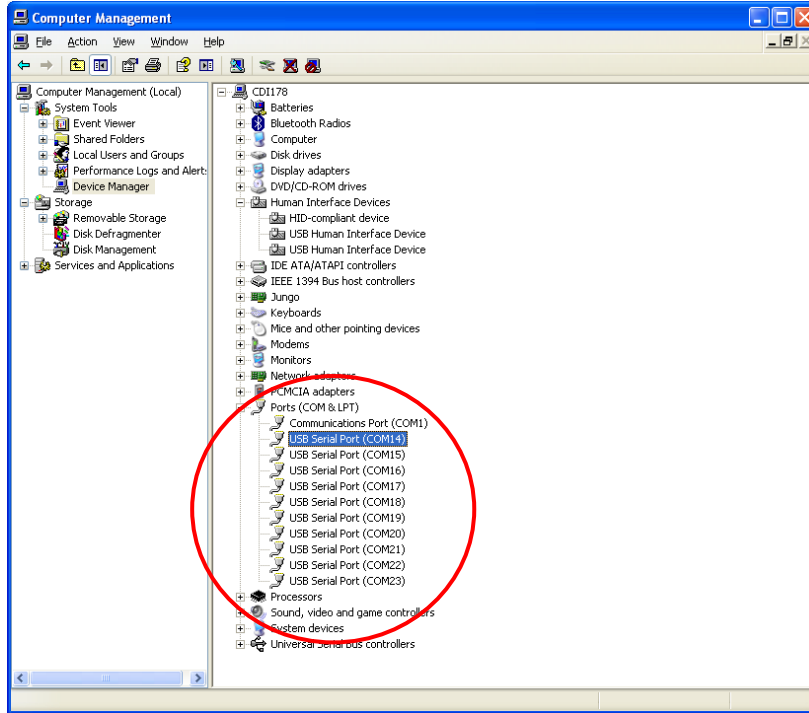


(Fig-4)

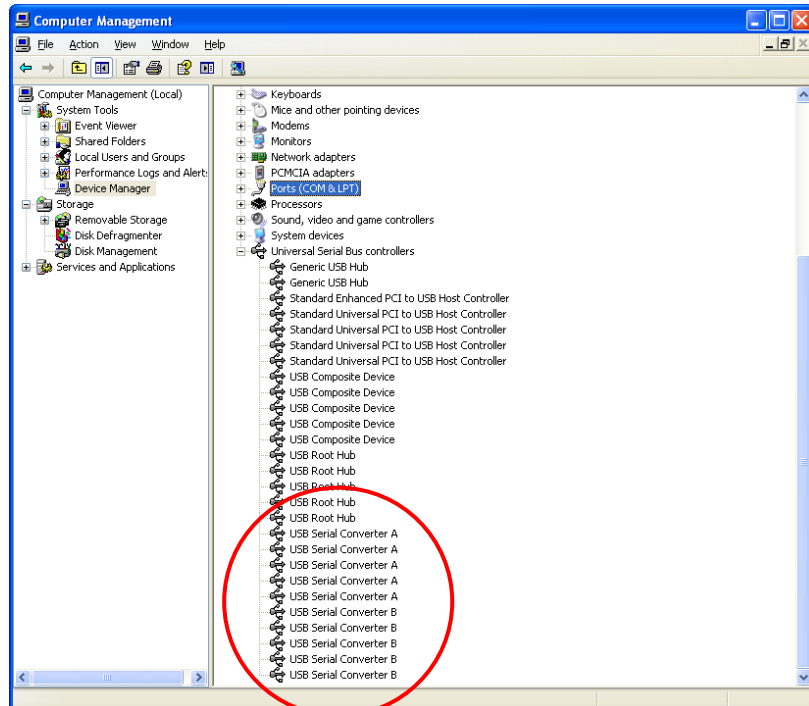


(Fig-5)

- 12) Once all of the device drivers have been updated, you should see ten “**USB Serial Port**” entries in the “**Ports (COM & LPT)**” section of Device Manager – each with an individual **COM Port** number assigned (see Fig-6). There should also be five “**USB Serial Converter A**” and five “**USB Serial Converter B**” entries in the “**Universal Serial Bus Controllers**” section of Device Manager (see Fig-7).



(Fig-6)



(Fig 7)