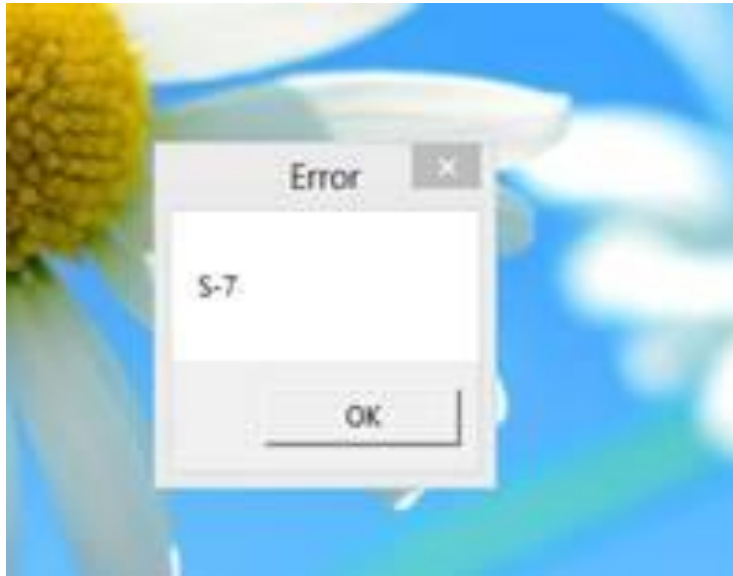


Product: Checkbox PC
Subject: S-7 Error during start up

After installing the Checkbox PC, there have been reports of an “**S-7**” error which prevents the software from running.



This error occurs when part of the software has not installed correctly.

Resolution

Locate the “**Checkbox.msi**” installer file and run it.

(Windows - 32-bit versions)

The location is usually “**C:\Windows\System32\Checkbox.msi**”

(Windows - 64-bit versions)

The location is usually “**C:\Windows\SysWOW64\Checkbox.msi**”

Once this installer has completed, the software should function correctly.