

Portables-Pro User Manual

H₂S
CO
CH₄



Portables-Pro

Quick and simple in-field gas test
and calibration solution



BE SAFE
POSITIVE
+ve Safety™


M070008
Issue 3 Jan 2015


CROWCON
Detecting Gas Saving Lives


NAVIGATION INSTRUCTIONS


The symbols in the left-hand margin of each page of the manual will enable you to carry out the following functions:


 **The buttons below do not function. They are for illustrative purposes only.**

 Click on this button to display the Contents page.

 Click on this button to display the previous page.

 Click on this button to display the next page.

 Click on this button to display the previous view (use it to return from a reference jump).

 Click on this button to display next view (use it to return to a reference jump).



Click this button to print some or all of the document (specific pages can be chosen).

 Exit

Click this button to exit the user guide.

 **Press the Esc key to display normal Acrobat® Controls.**

FUNCTIONS

CONTENTS

Prologue	8
General	8
1. Set-up	9
1.1 System requirements	9
1.2 Software installation	9
2. Starting the software	11
2.1 Home screen options	11
2.1.1 Language selection	11
3. Detect instruments	12
4. Configuration	14
4.1 Instrument settings	15
4.1.1 Serial number	15
4.1.2 Build date	15
4.1.3 Confidence strategy	16
4.1.4 Confidence interval	16
4.1.5 Action on startup	16
4.1.6 Bump test intermittent interval	17
4.1.7 Bump calibration interval	17
4.1.8 Next calibration due	17
4.1.9 Lock on calibration due	17
4.1.10 Prevent switch off in alarm	17
4.1.11 Enable bump testing	17
4.1.12 Calibrate after bump fail	18
4.1.13 Allow user configuration	18
4.1.14 Pumped strategy	18
4.1.15 Lock on bump failure	18
4.1.16 Splash screen 2 enabled	18
4.1.17 Backlight control	18
4.1.18 Threshold logging	18
4.1.19 Log interval	19
4.1.20 Upload configuration from instrument	19
4.1.21 Download configuration to instrument	19

4.2 Sensors	20
4.2.1 Sensor type	21
4.2.2 Channel ID	22
4.2.3 Gas	22
4.2.4 Display name	22
4.2.5 Display units	22
4.2.6 Bump test enabled	22
4.2.7 Bump test timeout	22
4.2.8 Bump test level	23
4.2.9 Bump test plus/minus deviation	23
4.2.10 Upper test limit	23
4.2.11 Lower test limit	23
4.2.12 Bump test group	23
4.2.13 Enable follow on cal	23
4.2.14 Correction Factor	23
4.2.15 Zero with background gas & Background gas level	24
4.2.16 Initialise Gain and Bias	24
4.2.17 Start up stability time	24
4.2.18 Alarm one threshold	24
4.2.19 Alarm one direction	24
4.2.20 Alarm one latching	24
4.2.21 Alarm two threshold	25
4.2.22 Alarm two direction	25
4.2.23 Alarm two latching	25
4.2.24 STWA threshold	25
4.2.25 LTWA threshold	25
4.2.26 Background gas level	25
4.2.27 Threshold value	25
4.2.28 Calibration interval	25
4.2.29 Save sensor	26
4.2.30 Refresh	26
4.2.31 PID Correction Factor Configuration	26
4.3 +ve Safety™	27
4.4 Instrument customisation	29
4.4.1 Splash screens	30
4.4.2 Sounder configuration	30

4.5	User configuration	31
4.6	Language options	32
4.7	Set instrument date & time from PC	33
4.8	Fleet management	34
4.8.1	Copy configuration to instrument	34
4.8.2	Save configuration to database	34
4.9	Instrument upgrade	35
4.9.1	Transfer to database	36
4.9.2	Transfer to instrument	36
5.	Calibration	37
5.1	Gas calibration	38
5.1.1	Initial zero	39
5.1.2	Zero	40
5.1.3	Initial calibration	40
5.1.4	Calibration	41
5.1.5	Calibration Due Date	42
5.1.6	Cross Calibration of Flammable Pellistor	43
5.1.7	Speedy bump test	45
5.1.8	Smart bump test	46
5.1.9	Save calibration data	46
5.1.10	Turn mute on	46
5.1.11	Calibration of PID Sensor	47
5.1.12	Print calibration report	47
5.1.13	Start log to CSV	47
5.1.14	Gas Testing Recommendations	47
5.2	Pump calibration	48
5.3	Battery calibration	49
5.3.1	Initialise a new battery	49
5.3.2	Extract battery age scalar	49
5.3.3	Write battery age scalar	49
6.	Logging	50
6.1	Upload event log	51
6.2	Upload data log	52
7.	Device Summary	54

8. Reporting	55
8.1 View event log	55
8.2 View data log	57
8.3 Calibration	59
8.4 Calibration report settings	61
9. Information and activation	62
9.1 About	62
9.2 License protection.	63
9.3 Settings	64
9.3.1 Database location	64
9.3.2 Register Modbus	65
9.4 Fixed systems	65
9.5 Portables	65
9.6 Support.	65
Appendix A: Data logging graph	66
Appendix B: Fleet Management download table	68
Appendix C: License level functions.	71
Appendix D: PID Correction Factors	74
Software license agreement.	82
1. GRANT OF LICENSE.	82
2. DESCRIPTION OF OTHER RIGHTS AND LIMITATIONS.	82
3. TITLE.	83
4. TERMINATION.	83
5. EXPORT CONTROLS.	83
6. MISCELLANEOUS.	83
7. LIMITED WARRANTY.	84
8. LIMITATION OF LIABILITY.	85
Crowcon contacts	86

Prologue

General

Portables-Pro allows full configuration and control of your gas detector, and will provide the following functions:

- Configuration of Instruments
- Calibration of Instruments
- Information Management

The level of access will depend on the license issued to the user. There are 4 levels of access available:

- Standard user
- Calibration Technician
- Fleet Manager
- Service user

i This manual contains a description of all the available functions. A user's license level will determine the functions that can be accessed.

The table on [page 71](#) indicates orange for the functions available for each license level.

1. Set-up

1.1 System requirements

The following are the minimum system requirements that will enable Portables-Pro to run efficiently:

- **Processor** Pentium 4 or equivalent
- **Processor speed** 2.2 GHz
- **Bus Speed** 400 mHz
- **Memory size** 1Gb
- **Hard Drive** 40 Gb
- **CD Rom** 48x (CD)
- **Monitor** 15 inch
- **Resolution** 1024 x 768 minimum
- **Operating system** Windows XP SP3 or later
- **USB port** 2
- **Mouse & Keyboard** Yes

1.2 Software installation

Ensure all previous versions of the software have been uninstalled before proceeding with the software installation.

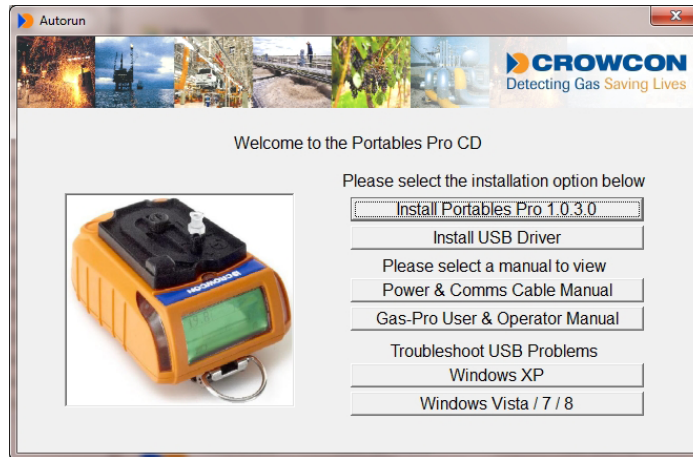
- ▶ Insert the CD supplied into your PC's CD drive.
- ▶ If your PC is set not to allow AutoPlay of CDs, select **Run Autorun.exe** from the dialogue box shown below.

Figure 1: AutoPlay dialogue box



- ▶ The Portables-Pro installation screen will be displayed as shown below:

Figure 2: Portables-Pro installation screen



- ▶ Click on Install Portables-Pro.
- ▶ Follow the on-screen instructions (including the validation of any operating system notifications) until the software is fully installed.
- ▶ If required, select the appropriate user guide from the installation screen and then close the screen.

2. Starting the software


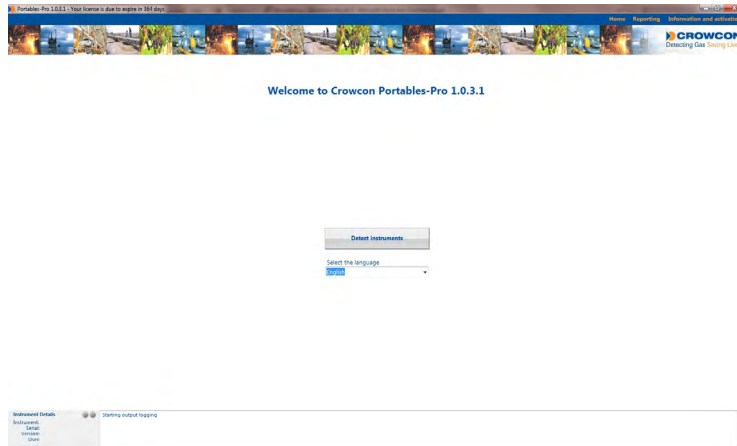
Double click on the Portables-Pro icon  on your PC's desktop. The Home screen will be displayed (see below).

Figure 3: Home screen



2.1 Home screen options

The following options are available from the Home screen without a detector being connected to the PC:

- Detect instruments (see [page 12](#))
- Reporting (see [page 55](#))
- Information and activation (see [page 62](#))
- Language selection (see below)

2.1.1 Language selection

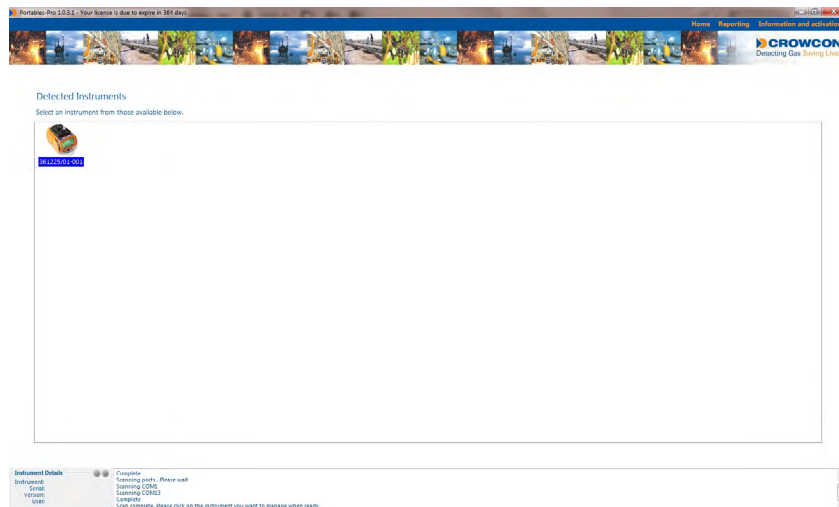
If necessary, select your preferred language from the **Select the language** drop down list at the base of the screen.

3. Detect instruments

To use Portables-Pro to configure or calibrate a detector, or view the data currently stored on it, proceed as follows:

- ▶ With Portables-Pro started and on the Home page, connect the detector to the PC via a USB port
- ▶ Turn the detector on and wait for the start up processes to finish.
- ▶ Click the **Detect instruments** button on the Home page. When the scan is complete, an image of the detector (in this example a Gas-Pro) will be shown with the unit's serial number underneath (see below).

Figure 4: Scan complete screen



- ▶ Click on the image of the instrument you wish to manage. After the detector's data has been read, a Device summary will be displayed (see below for an example).

Figure 5: Device summary screen

Name	Range	Units	Alarm one	Alarm two	Next bump test due	Next calibration due
CO	0 - 500	ppm	30	100	20 Mar 2013	09 Sep 2013
H2S	0 - 100	ppm	5	10	20 Mar 2013	09 Sep 2013
CH4	0 - 100	%LEL	20	40	20 Mar 2013	09 Sep 2013
CO2	0 - 5	%VOL	0.5	1.5	20 Mar 2013	09 Sep 2013
O2	0 - 25	%VOL	19	23.5	21 Mar 2013	09 Sep 2013
					Next calibration due	09 Sep 2013

Once on this screen, a series of options will appear below the banner. These options are:

- Device Summary (see [page 54](#))
- Configuration (see [page 14](#))
- Calibration (see [page 37](#))
- Logging (see [page 50](#))

For more information, see the relevant section in the manual for each of these options.

4. Configuration

The Configuration menu contains the following options:

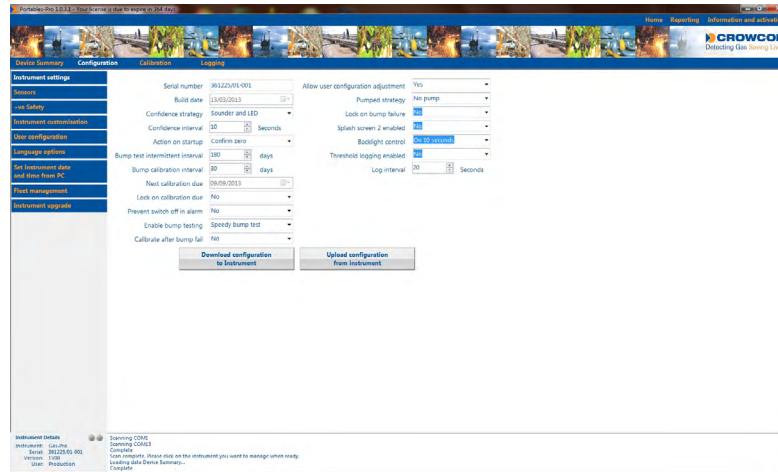
- Instrument settings (see [page 15](#))
- Sensors (see [page 20](#))
- +ve Safety™ (see [page 27](#))
- Instrument customisation (see [page 29](#))
- User configuration (see [page 31](#))
- Language options (see [page 32](#))
- Set instrument time and date from PC (see [page 33](#))
- Fleet Management (see [page 34](#))
- Instrument Upgrade (see [page 35](#))

Select the required option from the menu.

4.1 Instrument settings

When **Instrument settings** is selected from the Configuration menu, the screen shown below will be displayed:

Figure 6: Instrument settings screen



The Instrument settings function enables the user to view and/or alter the following settings:

- **To ensure the screen is displaying the current settings of the detector being managed, click on the Upload configuration button. The screen above will then be displayed.**
- **When all the required alterations have been made using this screen, click on the Download configuration button to write the changes to the detector being managed.**

4.1.1 Serial number

This field contains the detector's serial number and must only be altered if a the detector's main PCB has been replaced.

4.1.2 Build date

This field indicates the build date of the detector's software. It should only be altered when there has been a software update.

4.1.3 Confidence strategy

The Confidence strategy is how the detector indicates to the user that it is functioning normally. The following settings are possible:

Off	No indications
Sounder only	The detector just beeps at preset intervals (see 4.1.4 Confidence interval to set this interval).
LED only	The confidence LEDs flash at preset intervals (see 4.1.4 Confidence interval to set this interval).
Sounder and LED	The detector beeps and the confidence LEDs flash at preset intervals (see 4.1.4 Confidence interval to set this interval).

4.1.4 Confidence interval

This field sets the time interval in seconds for the Confidence strategy indications (minimum interval 5 seconds, maximum 60 seconds). Either edit the value in the field or click on the up and down arrows to increase or decrease the value as required.

4.1.5 Action on startup

This field allows the following 'Clean air' actions during startup to be set:

No action	No 'Clean air' zero at startup.
Confirm zero	This setting allows the 'Clean air' zero to be carried out at the user's discretion.
Always zero	This setting means a 'Clean air' zero will always be carried out at startup.

4.1.6 Bump test intermittent interval

Channels may be assigned a bump test category (None, Daily, Intermittent). Channels with the 'Intermittent' category will need to be bump tested at the interval set in this option.

4.1.7 Bump calibration interval

If a bump test should fail on a channel, the detector may be set to perform a 'follow-on calibration' (see [page 23](#)). If this follow-on calibration is successful, the calibration due date on the channel will be incremented by the **Bump Calibration interval**.

4.1.8 Next calibration due

This field is read-only. It shows the date on which the instrument is next due a calibration. As different channels may be due calibration on different dates, this date is the earliest of all calibration due dates. After passing this date, the instrument will display calibration due warnings on its display.

4.1.9 Lock on calibration due

Use this field to prevent further use of the detector (i.e. lock it) when the calibration interval has been exceeded. Yes to Lock, No to allow the detector to still be used.

4.1.10 Prevent switch off in alarm

Set this field to Yes to prevent the detector being turned off when it is in the alarm state.

4.1.11 Enable bump testing

Channels may be configured individually for bump testing, however this option is a global 'on/off' switch for bump testing. If this option is set to either 'smart' or 'speedy', then all channels whose individual setting is set to 'yes' (see [page 20](#)) will be tested. If this option is set to 'None', then no channels will be bump tested regardless of their individual settings.

For more information on bump testing, and the difference between a 'Smart Bump' and a 'Speedy Bump', see the Gas Pro Manual, section "Gas testing and calibration".

None	This option will disable Bump testing on the detector
Speedy Bump test	This option will cause the detector to carry out a Speedy Bump when a Bump test is initiated.
Smart Bump test	This option will cause the detector to carry out a Smart Bump when a Bump test is initiated.

Note: Smart bump functionality is not available for the PID sensor. If Gas-Pro is configured for smart bump then only a speedy bump will be performed on the PID sensor.

4.1.12 Calibrate after bump fail

Set this field to **Yes** in order to force the detector to perform a calibration when a Bump test fails.

4.1.13 Allow user configuration

There are a limited number of options (active user, volume etc.) that may be modified directly on the detector by the user. This ability can be enabled or disabled using the **Allow user configuration** option.

4.1.14 Pumped strategy

This field enables the detector to set as a pumped or non-pumped unit.

This setting should only be modified if a pump has been added or removed from a detector.

4.1.15 Lock on bump failure

Use this field to prevent further use of the detector (i.e. lock it) when the detector has failed a Bump test. Yes to Lock, No to allow the detector to still be used.

4.1.16 Splash screen 2 enabled

Set this field to Yes to enable splash screen 2 to be displayed during the start up process.

To modify the splash screen 2 image and text, see [page 30](#).

4.1.17 Backlight control

Use this field to change the detector's backlight to one of the following settings:

- Always off
- On for 10 seconds
- On for 30 seconds
- Always on

4.1.18 Threshold logging

Set this field to Yes if the detector is to ignore levels of gas in the log if they are beneath a set threshold limit.

Threshold limits can be set individually for each channel. For more information see **Sensors** on [page 20](#).

4.1.19 Log interval

Use this field to set the time interval in seconds between log readings.

The detector will record in the log the highest gas reading each channel has reported during the interval.

4.1.20 Upload configuration from instrument

Click this button to upload the detector's configuration settings to the PC.

4.1.21 Download configuration to instrument

Click this button to download the PC's configuration settings to the detector.

4.2 Sensors

All changes to sensors are performed on this page.

Amongst other features this page provides the ability to:

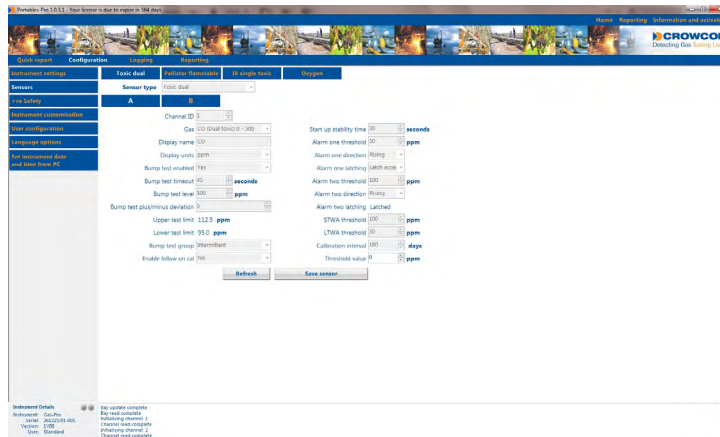
- Change alarm levels per sensor
- Change bump test parameters
- Change sensor display name and/or units
- Reconfigure detector to a new sensor type

When physically replacing a sensor type in a detector, the sensor settings will need to be updated with the new sensor type and alarm levels in order to reconfigure the detector to match the required sensor type.

When values are modified, the software will highlight them in yellow to express that they are yet to be written to the detector. When a **Save** is performed, the highlight will be removed.

When **Sensors** is selected from the Configuration menu, the screen below will be displayed:

Figure 7: Sensors screen

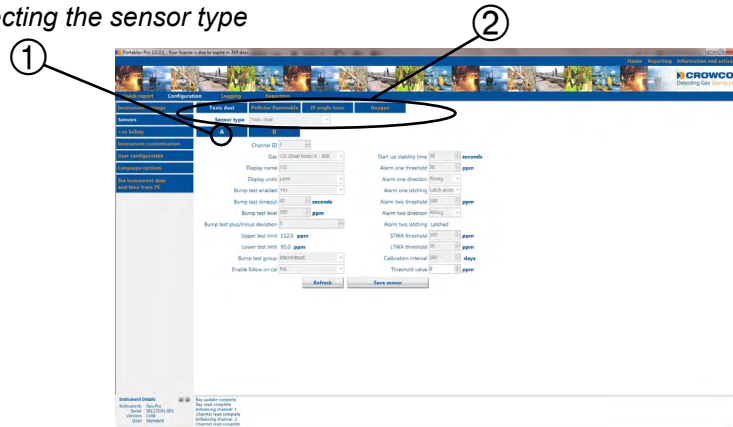


The Sensors function enables the current types and settings for the sensors installed in the detector's bays to be viewed and/or altered as follows:

4.2.1 Sensor type

This field displays the sensor type currently installed in the bay highlighted ①.

Figure 8: Selecting the sensor type



The settings available in the drop down list are dependant upon:

- The hardware board variant fitted in your detector.
- The sensor bay number.

There are different hardware boards which allow different sensors in certain bays, and certain bays only accept certain sensor types. Refer to the Gas-Pro Service Manual section 'sensor replacement' for further details on hardware variants and applicable sensor types.

If a sensor is to be changed for a different type, for example changing a Toxic Dual to a Toxic, the drop down box ② will have to be altered. Dependant upon the hardware variant and the bay number the possible settings are:

- No sensor
- Toxic single
- Toxic dual
- Oxygen
- Pellistor flammable
- IR single toxic
- IR
- Photoionization Detector (PID)

The Toxic Dual sensor type allows two channels to be configured. These will appear as two extra buttons below the sensor type box – channel 'A' and channel 'B'.

These channels cannot be configured with a single 'save' action, and instead must be saved one after the other.

4.2.2 Channel ID

This field contains a value representing the position the channel appears on the instrument display and should remain fixed. If the channel ID is zero then it will not appear on the screen, and will need to be set to the relevant value.

If a sensor has been added to a sensor bay that previously had no sensor fitted, it will be necessary to assign a new channel ID. Enter a channel ID between 1 and 5 that is not being used by another sensor type within the detector.

4.2.3 Gas

This field shows the current gas being monitored. If the sensor type has been changed, select the respective gas type from the drop down list.

When this selection is changed, default values will be loaded for all fields apart from alarm levels which will need to be specified.

4.2.4 Display name

If necessary, key in an appropriate identifier for the gas type being monitored.

This is the text string which will appear on the screen of the detector to identify the channel.

4.2.5 Display units

Use this field to select the display units for the gas being monitored. The options are:

- PPM
- %VOL
- %LEL

4.2.6 Bump test enabled

Set this field to Yes if the detector is to be enabled to carry out Bump tests.



The 'Enable bump testing' setting on the configuration page functions in conjunction with this value. See [page 17](#).

4.2.7 Bump test timeout

Use this field to set the time after which a Bump test will be stopped automatically if the test has not passed within this period.

4.2.8 Bump test level

Use this field to set the level of gas to be applied for the bump test for either speedy bump or smart bump.

 The units for this field are set in *Display units* on [page 22](#).

4.2.9 Bump test plus/minus deviation

Use this field to set the percentage error allowed from the applied gas level during a smart bump test.

4.2.10 Upper test limit

This is a read only value based on the **Bump test level** and **Bump test plus/minus deviation** settings.

4.2.11 Lower test limit

This is a read only value based on the **Bump test level** and **Bump test plus/minus deviation** settings.

4.2.12 Bump test group

Use this field to set the regularity of Bump tests. The options are:

- None
- Daily
- Intermittent

Setting this option to 'None' will mean the detector never initiates a bump test on the channel.

Setting to 'Daily' will mean the channel will require a daily bump test (put simply, it will have a bump interval of 1 day). The 'Intermittent' setting will require the channel to be bump tested at the interval defined in the settings page (**Bump test intermittent interval**, see [page 17](#)).

Note: The PID sensor can only be allocated to the 'intermittent' group; 'daily' group is not available for the PID sensor. The PID sensor must also be the only sensor in the intermittent group to ensure the bump test functionality operates correctly.

4.2.13 Enable follow on cal

Set this field to **Yes** to start a calibration when a sensor fails a Bump test.

This option works in conjunction with the **Calibrate after bump fail** setting on the Instrument settings page. Both settings will need to be set to **Yes** for a channel to perform this function.

4.2.14 Correction Factor

The PID sensor can be configured to detect Volatile Organic Compounds (VOC) other than Isobutylene by changing the correction factor.

See [Section 4.2.31](#) on [page 26](#) for full details on configuring the PID sensor.

4.2.15 Zero with background gas & Background gas level

Only available for CO₂.

This function allows the channel to be zeroed while in the presence of gas, at a level specified in the **Background gas level** field

Use this field to set the amount of ambient gas monitored in the sample.

When performing a zero, it will be assumed that the gas level the detector is zeroing to is the value in this setting.

If zero with background gas is set to **No**, the Background gas level will be assumed to be '0', in relevant units.

 **The units for this field are set in [Display units on page 22](#).**

4.2.16 Initialise Gain and Bias

When changing gas or sensor types, this checkbox **MUST** be checked. It causes the software to transfer gas characterisation data to the detector during a **Save**.


 **This checkbox should automatically check itself when a different gas type is selected.**

4.2.17 Start up stability time

This field indicates the time in seconds for a sensor to stabilise before monitoring starts.

4.2.18 Alarm one threshold

Use this field to set the threshold of gas monitored before an Alarm 1 is triggered.

 **The units for this field are set in [Display units on page 22](#).**

4.2.19 Alarm one direction

Use this field to set the direction in which monitored gas quantity should be changing in order to trigger the detector into the Alarm 1 state (e.g. Toxic gas = rising).

4.2.20 Alarm one latching

Set this field to Unlatched if the Alarm 1 state will automatically be removed if the monitored gas level returns to normal, or Latched to remain in the Alarm 1 state once triggered.

4.2.21 Alarm two threshold

Use this field to set the threshold of gas monitored before an Alarm 2 is triggered.

 The units for this field are set in *Display units on page 22*.

4.2.22 Alarm two direction

Use this field to set the direction in which monitored gas quantity should be changing in order to trigger the detector into the Alarm 2 state (e.g. Oxygen = falling, Toxic gas = rising).

4.2.23 Alarm two latching

This field is permanently set to the latched state which means once triggered, it will remain in the alarm state.

4.2.24 STWA threshold

Use this field to set the threshold value for the STWA (Short Time Weighted Average) alarm for toxic sensors.

 The units for this field are set in *Display units on page 22*.

4.2.25 LTWA threshold

Use this field to set the threshold value for the LTWA (Long Time Weighted Average) alarm for toxic sensors.

 The units for this field are set in *Display units on page 22*.

4.2.26 Background gas level

Use this field to set the amount of ambient gas monitored in the sample.

 The units for this field are set in *Display units on page 22*.

4.2.27 Threshold value

If the channel's gas reading exceeds this threshold value, data logging will start on all channels. When the reading drops below this threshold value, logging will stop.

Use this feature if you wish to minimise the amount of data that gets stored on the instrument.

4.2.28 Calibration interval

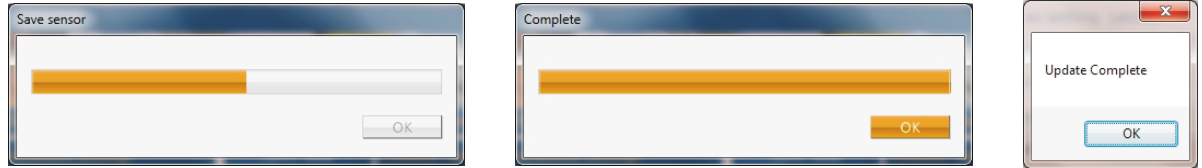
The calibration interval field is the number of days the calibration date will be incremented after a successful gas calibration of the sensor (see *page 41*).

The calibration date of the instrument will be set to today's date PLUS the number of days specified in this field.

4.2.29 Save sensor

- ▶ When the required alterations have been made, click the **Save sensor** button to upload the changes to the detector. The **Save sensor** status box will be displayed.
- ▶ When complete, click **OK**. The **Update complete** box will then be displayed. Click **OK** (see below).

Figure 9: Save sensor procedure



4.2.30 Refresh

Click the **Refresh** button to download the current sensor settings to this screen.

4.2.31 PID Correction Factor Configuration

PID sensors are configured and calibrated to Isobutylene when manufactured.

The PID sensor can be configured to detect Volatile Organic Compounds (VOC) other than Isobutylene by changing the correction factor in the PID sensor type options.

For a list of VOC correction factors, refer to [Appendix D: PID Correction Factors](#) on [page 74](#).

- ▶ Enter the correction factor for the required VOC in the Correction Factor field
- ▶ The maximum allowable correction factor is 10.0
- ▶ The minimum allowable correction factor is 0.1
- ▶ The name of the VOC should then be entered in the Display name field.
- ▶ Alarm one threshold, alarm two threshold, STWA threshold & LTWA threshold fields should then be updated as appropriate for the specific VOC.

The PID sensor must ALWAYS be calibrated with Isobutylene even if it is configured to a different VOC type.

If the sensor is not calibrated with Isobutylene the sensor will be incorrectly calibrated and may cause the sensor to display incorrect gas readings.

4.3 +ve Safety™

+ve Safety™ is a feature of the detector which allows quick and easy assessment of a detector to decide whether it has entered an error or warning state, and if all systems are healthy.

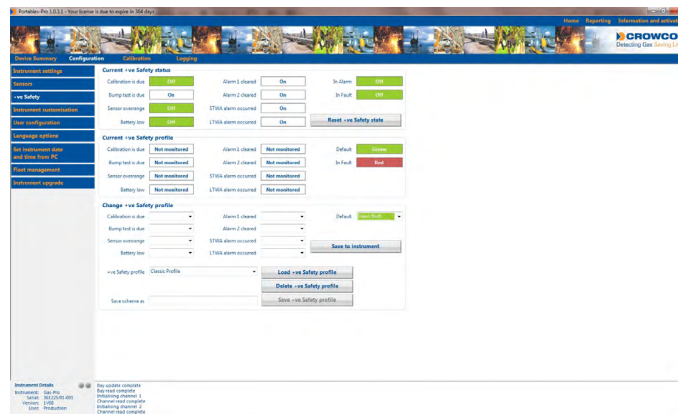
The LED on the front of the detector can illuminate green, yellow or red, and may flash dependant on settings. This behaviour is defined in the following section.

Where an option has been changed to 'Not monitored', the detector will effectively ignore the associated state and will not change +ve safety if the state is entered.

The +ve Safety™ function enables the user to view, edit, create or delete a +ve Safety™ profile as follows:

► Select **+ve Safety** from the Configuration menu. The screen below will be displayed:

Figure 10: +ve Safety™ screen



► The +ve Safety™ screen is divided into the following 3 areas:

Current +ve Safety™ status This screen area displays the current status of each +ve Safety™ alert within the attached detector. These status levels can be reset to **Off** by clicking on the **Reset +ve Safety™** button.

Current +ve Safety™ profile This screen area displays +ve Safety™ profile for the detector currently being monitored by Portables-Pro. None of the settings can be altered in this screen area.

Change +ve Safety™ profile This screen area enables a +ve Safety™ profile to be viewed, edited, created or deleted as follows:

- ▶ Previously saved profiles may be loaded by selecting the profile name from the **+ve Safety profile** drop down list, and the clicking the **Load +ve Safety profile** button.
- ▶ If you wish to create a new profile, select the profile with the nearest settings to your requirements from the **+ve Safety™ profile** drop down list, make the necessary changes, key the new profile's name into the **Save scheme** as box and click the **Save +ve Safety profile** button.
- ▶ If you wish to delete a previously created profile, simply select it from the **+ve Safety profile** drop down list, and click the **Delete +ve Safety profile** button.

You cannot delete the Crowcon supplied default profiles.

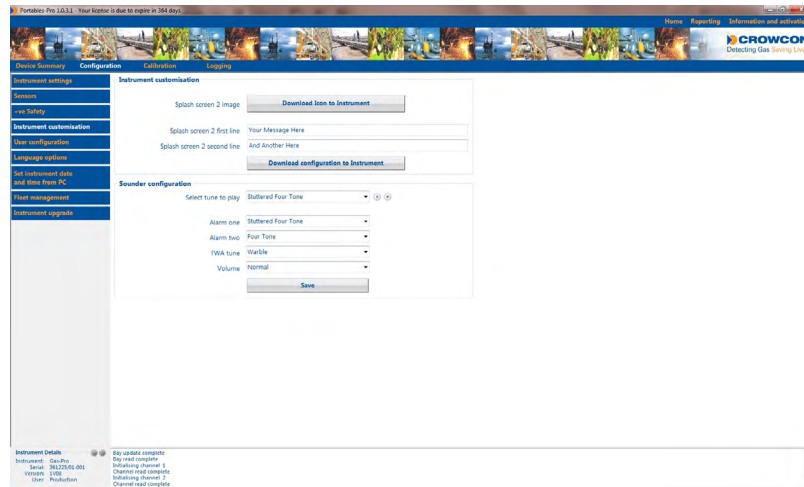
The 'default' option is the state the LED should be in when no other states have been triggered.

- ▶ With the exception of the **Default** field, the drop down lists for the configurable fields that control the illumination of the +ve Safety LED can be set as follows:
 - Not monitored (no action undertaken on this event)
 - Green (when condition met)
 - Red (when condition met)
 - Amber (when condition met)
 - Off (when condition met)
- ▶ The **Default** field can be set to one of the following which controls the illumination condition when the +ve Safety LED would be illuminated green:
 - Green flash
 - Off
 - Green
- ▶ When all the alterations have been made, click the **Save to instrument** button, this will download the chosen +ve Safety Profile to the detector.

4.4 Instrument customisation

When **Instrument customisation** is selected from the Configuration menu, the screen below will be displayed.

Figure 11: Instrument customisation screen



This function enables the following to be altered:

- Splash screen 2 (see [page 30](#))
- Sounder configuration (see [page 30](#))

When all the required alterations have been made to the splash screens and sounder, click the Save button.

4.4.1 Splash screens

During the start up process, a detector can display 1 or 2 splash screens (according to its configuration) but only splash screen 2 can be altered. To set up splash screen 2, proceed as follows:

- ▶ Click the **Download icon to instrument** button and browse to the location of the required Crowcon splash image file (.csi).

Select this image and click **OK**. The image will then be loaded to the instrument.

- ▶ Alter the text for the splash screen's first and second line as required.

If the text entered is greater than 12 characters, the message will scroll across the screen when the detector is displaying it at start up.

- ▶ When all the required alterations to the splash screen 2 have been made, click the **Download configuration to instrument** button.

The 'enable splash 2' setting on the instrument settings page (see [page 18](#)) will need to be set to 'yes' in order for these options to be seen on the instrument.

4.4.2 Sounder configuration

This function enables the alarm sound and volume to be altered as follows:

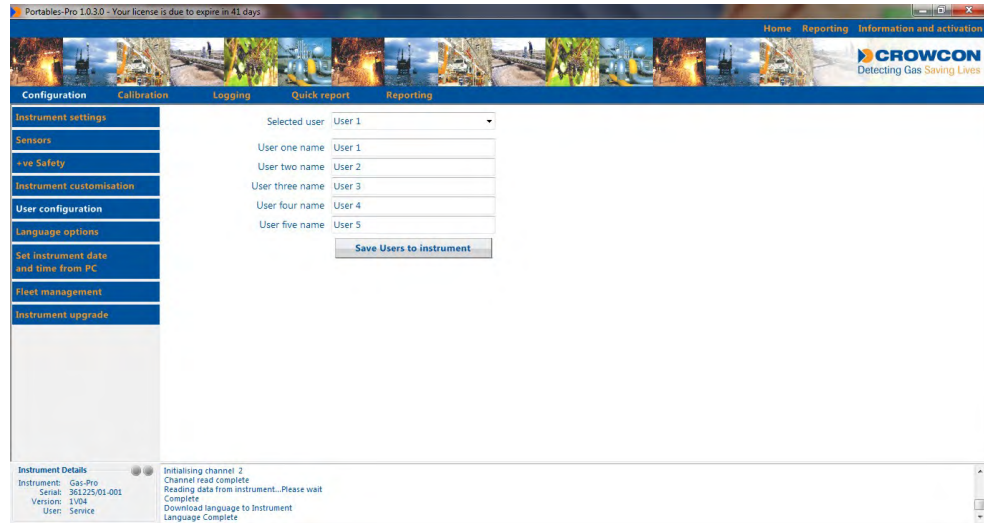
- ▶ Use the **Select tune to play** drop down list and the **Play** and **Stop** buttons to help select the required alarm sounds.
- ▶ Select the alarm sound required from the **Alarm one**, **TWA tune** and **Alarm two** drop down lists.
- ▶ Set the required sounder volume from the **Volume** drop down list (Normal = 95dB, High = 98dB).
- ▶ When all the required changes have been made, click on the **Save** button to apply changes.

4.5 User configuration

This function enables up to 5 user names to be entered and any one of these to be selected as the active user which will be shown on the instrument screen as follows:

- ▶ Select **User configuration** from the Configuration menu. The following screen will be displayed:

Figure 12: User configuration screen



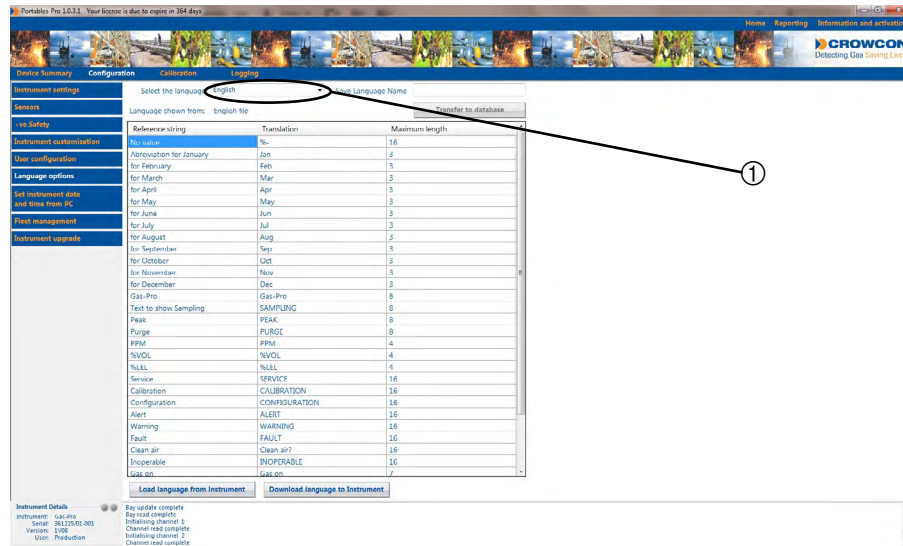
- ▶ If required, edit the user names in the **User name** fields.
- ▶ Select the required nominated user from the **Selected user** drop down list and click the **Save Users to instrument** button. All the User names will be loaded to the detector with the detector's nominated user being set to the name shown in the **Selected user** field.

4.6 Language options

This function allows the detector's screen display language to be changed or edited as follows:

- ▶ Click the **Language options** from the Configuration menu. The following screen will be displayed.

Figure 13: Language options screen

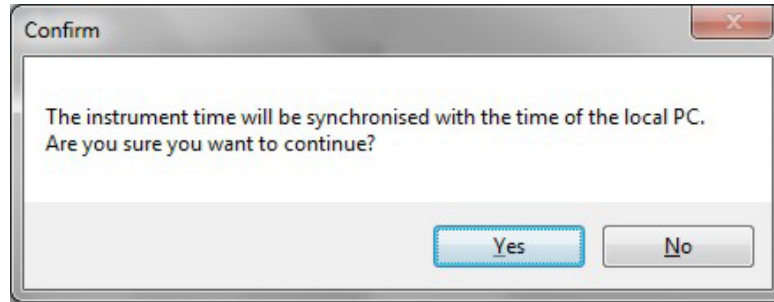


- ▶ To download a different language file to the detector, **Select the language** file from the drop down list ① and it will be displayed in the language table. Click the **Download to instrument** button to then save the language to the detector.
- ▶ To view the language currently loaded on the detector, click the **Load language from instrument** button.
- ▶ If you wish to enter a custom language into the detector, click on the text to be edited in the **Translation** column. Make the required change, click on another cell to ensure the change is made and then click on the **Download language to instrument** button. Your custom language will be loaded to the instrument.
- ▶ If you wish to store your custom language setup for use in another instrument, enter the name you wish to save this language as in the text box and click **Save to database**.

4.7 Set instrument date & time from PC

- ▶ Select **Set instrument date & time from PC** from the Configuration menu. The confirmation dialog box below will be displayed.

Figure 14: Time and date confirmation dialog box.



- ▶ To set the detector's internal clock to the time of the PC the instrument is connected to, click **Yes**. To abort, click **No**.

4.8 Fleet management

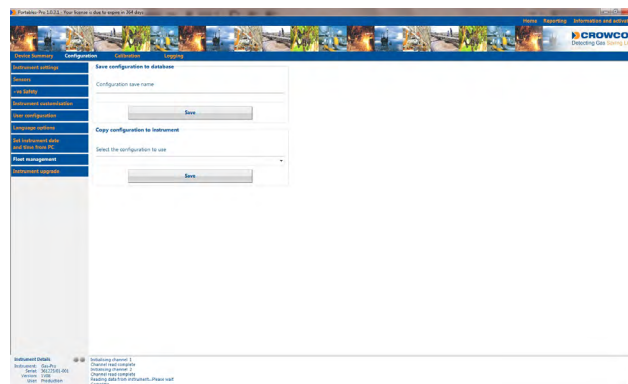
The Fleet management function enables a fleet manager to save the current detector configuration to the database and subsequently download it to other instruments that are required to perform in the same way.

Fleet management allows the configuration items of a detector to be saved to the database. A generic detector that has the same hardware and sensor configuration can then effectively be easily configured to have the same configuration settings as the initial detector. This is achieved by downloading the saved configuration from the database to the 'generic' detector.

This function is intended to be used between instruments which have identical hardware setups. It cannot be used to change the gas on a channel, or the type of sensor in a bay, in an instrument that has a different hardware variant/sensor fit.

► Select **Fleet management** from the Configuration menu. The following screen will be displayed:

Figure 15: Fleet Management screen



4.8.1 Copy configuration to instrument

When selected, this function enables a previously saved configuration (see below) to be downloaded to an instrument. Select a configuration from the drop down list and click **Save**.

Not all values are downloaded to instruments. The Fleet Management download table in Appendix B on page 68 shows the values that are excluded from the download.

4.8.2 Save configuration to database

When selected, this function enables a fleet manager to save the current configuration of the attached instrument to the database so that it can be subsequently copied to one or more instruments (see above). Key in the required configuration file name and click **Save**.

4.9 Instrument upgrade

Instrument upgrade allows the user to extract all instrument configuration items from the detector and save this to the database. This may be used for example when an instrument's main PCB needs to be replaced, this will allow all configuration data to easily be removed and then uploaded to the instrument when a new PCB is installed.

This significantly simplifies the process of reconfiguring a detector when the main PCB is replaced.

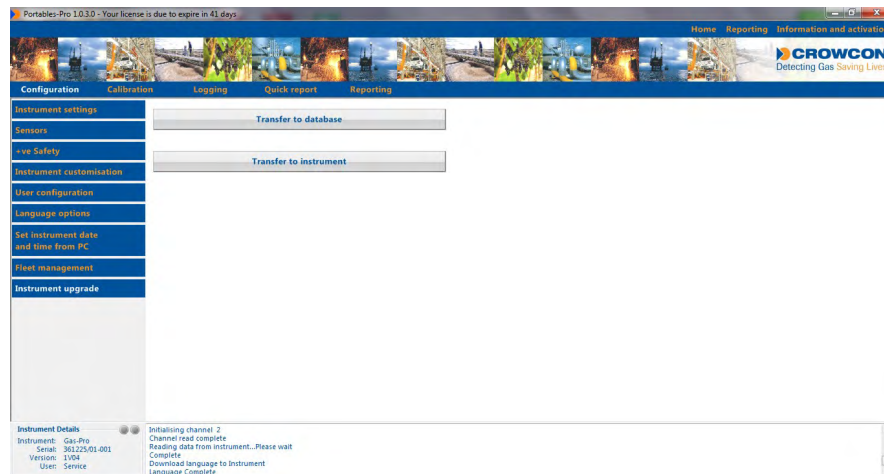
This function is intended to be used to transfer the complete setup from a broken or faulty PCB onto a new PCB with the same sensor fit as the previous board.

When a main board is replaced, there are further actions required for the battery configuration dependant on the battery used. Refer to the Gas-Pro Service Manual section 'Replacing the Main PCB for further details.

If the existing battery is used with the new board, no further battery configuration is required as the battery information is extracted via the instrument upgrade process. However if a new battery is fitted, once the instrument upgrade process is complete and the new board is reconfigured, the new battery must be initialised, see [5.3 Battery calibration](#).

► Select **Upgrade instrument** from the Configuration menu. The following screen will be displayed:

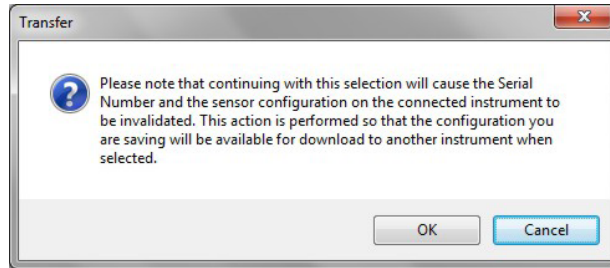
Figure 16: Instrument upgrade screen



4.9.1 Transfer to database

- ▶ When the function is selected, the following warning will be displayed:

Figure 17: Transfer to database warning screen



- ▶ Click **OK** to proceed or **Cancel** to abort the transfer.
- ▶ On clicking **OK**, the software will proceed to extract all information from the detector. When complete, the configuration will be stored in the software database via the serial number reference. The detector will then have its serial number changed to 'INVALID' to signify that the board should no longer be used.

4.9.2 Transfer to instrument

Use this function to reinstall the configuration of the instrument when its main PCB has been repaired or replaced.

- ▶ Click **Transfer to instrument**, then select the relevant serial number from the drop down list. Once the correct serial number has been selected, click **Write to Instrument**.
- ▶ The software will then proceed to write all configuration data from the database back into the instrument. When complete, the instrument will require a calibration on all channels.

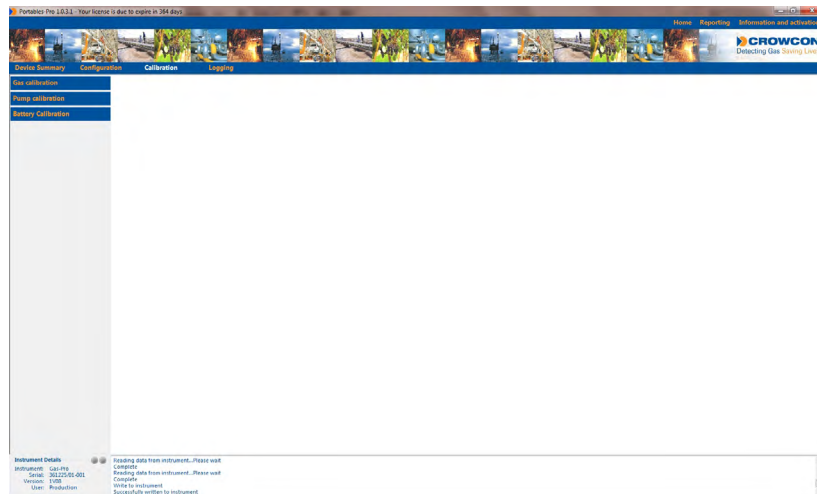
5. Calibration

The Calibration menu contains the following options:

- Gas calibration (see [page 38](#))
- Pump calibration (see [page 48](#))
- Battery calibration (see [page 49](#))

When the Calibration menu is selected, the following screen will be displayed:

Figure 18: Calibration menu

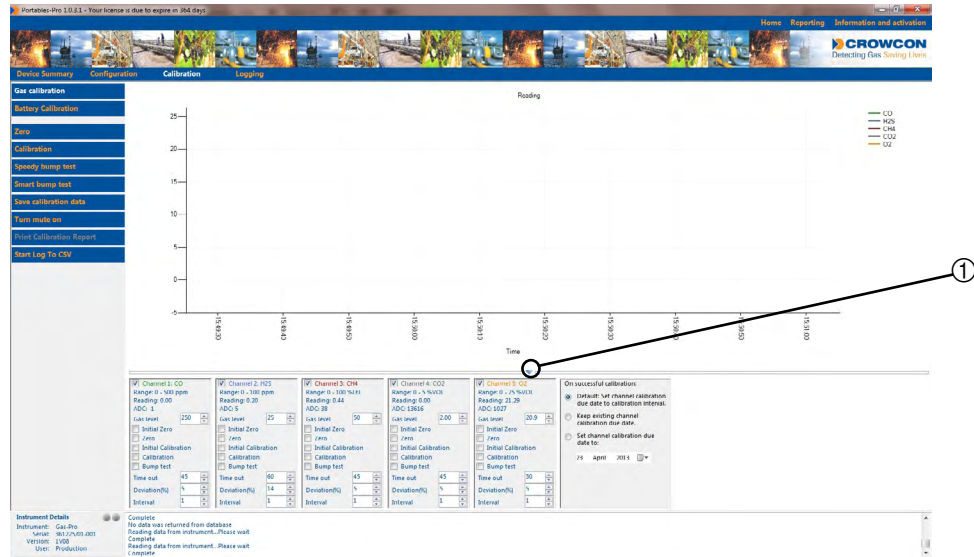


5.1 Gas calibration

This page can be used for various reasons, including when an instrument/sensor requires a calibration or bump test, when a new sensor has been fitted, when an instrument upgrade has been performed (see [page 35](#)), or simply if you wish to graphically view the current gas readings from the detector.

Select **Gas calibration** from the Calibration menu, the following screen will be displayed:

Figure 19: Gas calibration screen



The screen includes a live gas reading graph, showing data from the last two minutes from all channels.

Time of readings is marked on the x-axis of the graph, and gas reading level is on the y-axis. The y-axis shall auto-resize itself so that all readings are visible.

The y-axis is in 'channel units', as different channels may be measured in different units. i.e. a reading of '20' on an Oxygen channel will correspond to 20% volume, a reading of '20' on a CO channel will correspond to 20ppm.

If you wish to hide the controls at the bottom of the screen click the blue arrow ① between the controls and the graph, and vice versa to reveal them.

Individual channels may be shown or hidden from the graph by clicking the checkbox to the left of the coloured channel names.

Gas readings and raw ADC values can also be read numerically in each channel's control box at the bottom of the screen.

There are a number of buttons that will have appeared at the left of the screen; these are:

- Zero (see [page 39](#) and [page 40](#))
- Calibration (see [page 40](#) and [page 41](#))
- Speedy Bump Test (see [page 45](#))
- Smart Bump Test (see [page 46](#))
- Save Calibration Data (see [page 46](#))
- Turn Mute On (see [page 46](#))
- Print Calibration Report (see [page 47](#))
- Start Log To CSV (see [page 47](#))

The function of each of these buttons is described in the following sections.

5.1.1 Initial zero

This function is used when a new sensor has been added to the detector, when the sensor has had the **Initialise gain and bias** function performed (see [page 24](#)), or when the **Instrument upgrade** function has been performed (see [page 35](#)).

It is effectively the first zero operation that must be performed on a newly set up sensor. Following a successful **Initial zero**, all subsequent zeros should be standard zero operations.

An initial zero should only be performed once on a sensor at time of initial fitment or replacement.

- ▶ To proceed, follow the steps below:
- ▶ Ensure the detector is in clean air, and that ADC readings are stable. Click the **Initial zero** box or boxes in the required channel(s).
- ▶ Click the **Zero** button in the calibration options to the left of the screen. As each channel is zeroed, it will be reported at the base of the screen.

 **Your detector may beep momentarily for each channel that is zeroed.**

- ▶ Un-check the **Initial zero** boxes when the zero function is complete.

5.1.2 Zero

This function enables users to zero any one or more of the channels.

A standard zero should be used rather than an initial zero when an initial zero has already been performed on the sensor since its first set up.

In most cases of operation, a standard zero should be used as follows:

- ▶ Ensure the detector is in clean air.
- ▶ Click the **Zero** box or boxes in the required channel(s).
- ▶ Click the **Zero** button in the calibration options to the left of the screen. As each channel is zeroed, it will be reported at the base of the screen.

Your detector may beep momentarily for each channel that is zeroed.

- ▶ Un-check the **Zero** boxes when the zero function is complete.

5.1.3 Initial calibration

This function is used when a new sensor has been added to the detector, when the sensor has had the **Initialise gain and bias** function performed (see [page 24](#)), or when the **Instrument upgrade** function has been performed (see [page 35](#)).

Performing an initial calibration rather than a standard calibration will store extra data to the device to gauge the accuracy of subsequent calibrations.

An initial calibration should only be performed once on a sensor at time of initial fitment or replacement.

To carry out a calibration on one or more channels, proceed as follows:

- ▶ Make a note of the level of the gases to calibrate on your calibration gas cylinder.
- ▶ Enter these values in the 'gas level' text box for each channel to be calibrated.

Be aware of the cross sensitivity of sensors.

- ▶ Attach a flow plate firmly to the device.
- ▶ Attach a gas pipe from the required calibration gas cylinder to the flow plate inlet.
- ▶ Attach a gas pipe from the outlet/exhaust of the flow plate into a sensible extraction point, e.g. out of a window.
- ▶ Click the **Initial Calibration** box or boxes for the required channel(s).

Your detector may show a warning during the calibration process. These may safely be dismissed.

- ▶ Open the valve on the gas cylinder and wait for ADC readings on the required channel(s) to stabilise.
- ▶ Click the **Calibration** button in the calibration options to the left of the screen. The result of the calibration for each channel selected will be displayed at the base of the screen.
- ▶ Close the valve on the gas cylinder and detach the pipes and flow plate.
- ▶ When you have performed calibrations on all channels you wish to calibrate, click the **Save calibration data** button. This will transfer all calibration results to the database, ready for producing a calibration report.

When performing calibrations sequentially with single gas cylinders, it is unwise to click the Save calibration data button between calibrations as the results will be stored across several reports rather than all in the same report.

If Save calibration data is not clicked then it will not be possible to create a calibration report at a later date.

5.1.4 Calibration

This function enables a user to carry out a calibration on one or more channels.

A standard calibration should be used rather than an initial calibration when an initial calibration has already been performed on the sensor since its first set up.

In most cases of operation, a standard calibration should be used as follows:

- ▶ Make a note of the level of the gases to calibrate on your calibration gas cylinder.
- ▶ Enter these values in the 'gas level' text box for each channel to be calibrated.

Be aware of the cross sensitivity of sensors.

- ▶ Attach a flow plate firmly to the device.
- ▶ Attach a gas pipe from the required calibration gas cylinder to the flow plate inlet.
- ▶ Attach a gas pipe from the outlet/exhaust of the flow plate into a sensible extraction point, e.g. out of a window.
- ▶ Click the **Calibrate** box or boxes for the required channel(s).

Your detector may show a warning during the calibration process. These may safely be dismissed.

- ▶ Open the valve on the gas cylinder and wait for ADC readings on the required channel(s) to stabilise.
- ▶ Click the **Calibrate** button in the calibration options to the left of the screen. The result of the calibration for each channel selected will be displayed at the base of the screen.
- ▶ Close the valve on the gas cylinder and detach the pipes and flow plate.
- ▶ When you have performed calibrations on all channels you wish to calibrate, click the **Save calibration data** button. This will transfer all calibration results to the database, ready for producing a calibration report.

When performing calibrations sequentially with single gas cylinders, it is unwise to click the Save calibration data button between calibrations, as the results will be stored across several reports rather than all in the same report.

If Save calibration data is not clicked then it will not be possible to create a calibration report at a later date.

5.1.5 Calibration Due Date

Three options are presented to production and service users on how the calibration due date will be updated upon successful calibration of a channel, these are:

- **Default:** the calibration date will be set to today's date PLUS the number of days specified for that channel's calibration interval. This value is specified, per channel, as the **Calibration interval** value on the sensors page (see [page 25](#)).
- **Keep existing channel cal due date:** The calibration will be performed, and the cal due date will be maintained at its current value for each channel. Note that different channels may have different due dates. Each channel will therefore have the existing due date persisted.
- **Set channel cal due date to [date]:** The user may select any date they wish from the date/time selector to set the cal due date to. Check the radio button to the left of 'set channel calibration due date to', then click the arrow to the right of the date box. A calendar will be shown, which may be navigated around to select the calibration due date you wish the channels to be assigned upon successful calibration.

5.1.6 Cross Calibration of Flammable Pellistor

Calibration of the flammable pellistor is normally undertaken with target gas, calibrating the sensor with the same gas the sensor is configured to detect.

It is possible to calibrate with Methane gas and the implementation of cross calibration factors, Gas-Pro's manufactured to detect Propane, Butane and Pentane.

For example Portables-Pro can be used to calibrate a Gas-Pro with a propane configured sensor utilising methane gas and cross calibration factors.

This is achieved by entering the 'equivalent' propane concentration into the Gas Level text box on the Gas Calibration page, then applying the methane gas and following the normal calibration procedure.

For example if the cylinder of gas to be used contains 27.3% LEL methane.

For an ATEX calibrated Gas-Pro and with reference to the table below a value of

$$27.3 \times 1.825 \text{ (methane gas level applied } \times \text{ cross calibration factor)} = 49.8 \text{ \% LEL}$$

would be entered into the Gas Level text box as this is the equivalent level of propane for the applied 27.3% LEL methane.

The normal calibration process should then be followed.

Cross calibration factors for ATEX calibrated and UL calibrated Gas-Pro's are different. The appropriate calibration factor should be used or Gas-Pro will be incorrectly calibrated and may cause the sensor to display incorrect gas readings.

ATEX/IECEX

	LEL (% VOL)	Cross Calibration Factors Relative to Methane
Methane	4.4	1.00
Propane	1.7	1.825
Butane	1.4	1.825
Pentane	1.1	2.22

UL

	LEL (% VOL)	Cross Calibration Factors Relative to Methane
Methane	5.0	1.00
Propane	2.1	1.68
Butane	1.8	1.68
Pentane	1.4	1.99

This method of calibration may cause the pellistor to enter pellistor saver mode, if too high a value of methane is applied as the calibration gas.

The tables below show the recommended maximum levels of methane that should be applied to avoid the sensor entering pellistor saver mode. In practice higher levels may be possible without triggering pellistor saver mode.

ATEX/IECEX**Recommended Maximum Level of Methane for Cross Calibration**

Propane	44% LEL
Butane	44% LEL
Pentane	36% LEL

UL**Recommended Maximum Level of Methane for Cross Calibration**

Propane	48% LEL
Butane	48% LEL
Pentane	40% LEL

5.1.7 Speedy bump test

This function enables a user to carry out a Speedy bump test on a selected channel.

For more information on Bump Tests, and for a more in depth description of a 'Speedy' bump test, refer to the Gas-Pro manual.

- ▶ Make a note of the level of the gases to bump test on your gas cylinder. Enter these values in the 'gas level' text box for each channel to be tested.

Be aware of cross sensitivity of sensors.

- ▶ The Timeout value will be how long the detector will wait before declaring a speedy bump test to have failed, if alarm level one has not yet been triggered.
- ▶ The bump due date in the detector will be set to today's date PLUS the value in the 'Interval' field, should the bump test be successful.
- ▶ Attach a flow plate firmly to the device.
- ▶ Attach a gas pipe from the required bump gas cylinder to the flow plate inlet.
- ▶ Attach a gas pipe from the outlet/exhaust of the flow plate into a sensible extraction point, e.g. out of a window.
- ▶ Click the **Bump test** box for the required channels.
- ▶ Open the valve on the gas cylinder and immediately select **Speedy bump test**. The result of the test will be displayed at the base of the screen.
- ▶ Close the valve on the gas cylinder and detach the pipes and flow plate.

5.1.8 Smart bump test

This function enables a user to carry out a Smart bump test on a selected channel.

For more information on Bump Tests, and for a more in depth description of a 'Smart' bump test, refer to the Gas-Pro manual.

- ▶ Make a note of the level of the gases to bump test on your gas cylinder. Enter these values in the 'gas level' text box for each channel to be tested.

Be aware of the cross sensitivity of sensors.

- ▶ The Timeout value will be how long the detector will wait before taking the reading for the smart bump test.
- ▶ The deviation value is the tolerance level from the gas level applied to determine if the bump test should passed or failed.
- ▶ The bump due date in the detector will be set to today's date PLUS the value in the 'Interval' field, should the bump test be successful.
- ▶ Attach a flow plate firmly to the device.
- ▶ Attach a gas pipe from the required bump gas cylinder to the flow plate inlet.
- ▶ Attach a gas pipe from the outlet/exhaust of the flow plate into a sensible extraction point, e.g. out of a window.
- ▶ Click the **Bump test** box for the required channels.
- ▶ Open the valve on the gas cylinder and immediately select **Smart bump test**. The result of the test will be displayed at the base of the screen.
- ▶ Close the valve on the gas cylinder and detach the pipes and flow plate.

Smart bump test will be disabled if the Bump test option is ticked for a PID sensor. Only Speedy bump test is available for the PID sensor.

5.1.9 Save calibration data

Select this function to save the calibration data to the database.

5.1.10 Turn mute on

Use this function to turn the detector's audio alarm off whilst carrying out bump tests and calibrations.

The detector will automatically turn the mute function off again after 5 minutes.

5.1.11 Calibration of PID Sensor

PID sensors are configured and calibrated to Isobutylene when manufactured.

The PID sensor can be configured to detect Volatile Organic Compounds (VOC) other than Isobutylene by changing the correction factor in the PID sensor type options.

The PID sensor must ALWAYS be calibrated with Isobutylene even if it is configured to a different VOC type.

Portables-Pro will display the PID gas reading in the Gas calibration screen as Isobutylene as this must be the gas used for calibration

Gas-Pro will show on its display gas readings as configured by the correction factor, therefore readings shown on Gas-Pro display and Portables-Pro may differ if the instrument is not configured with a correction factor for Isobutylene

Gas-Pro must be powered and switched on for 15 minutes prior to performing a calibration on the PID sensor.

5.1.12 Print calibration report

This function is only available when the Save calibration function has been used.

▶ To print out the calibration report to your default printer, click the **Print calibration report** button.

5.1.13 Start log to CSV

The function will output the data displayed in the graph to a csv file in the user's data folder.

5.1.14 Gas Testing Recommendations

When using reactive gases all pipe work and regulators should be purged with the respective reactive gas.

Crowcon recommend using a typical flow rate of the test of 0.5 litres per minute.

When using chlorine and chlorine dioxide as the test gas the typical flow rate should be increased to 1 litre per minute.

Chlorine dioxide gas testing and calibration must only be carried out using a chlorine dioxide generator. Crowcon recommend Advanced Calibration Designs, inc. Gas Generator, model: CAL2000 (P/N: 750-0603-AT), using the Chlorine Dioxide Cell (P/N: 510-2060-00). Refer to generator instructions for use.

Ozone gas testing or calibration must only be carried out using an ozone generator. Crowcon recommend Analytical Technology, inc. Ozone Generator, Model: A23-14. Refer to generator instructions for use.

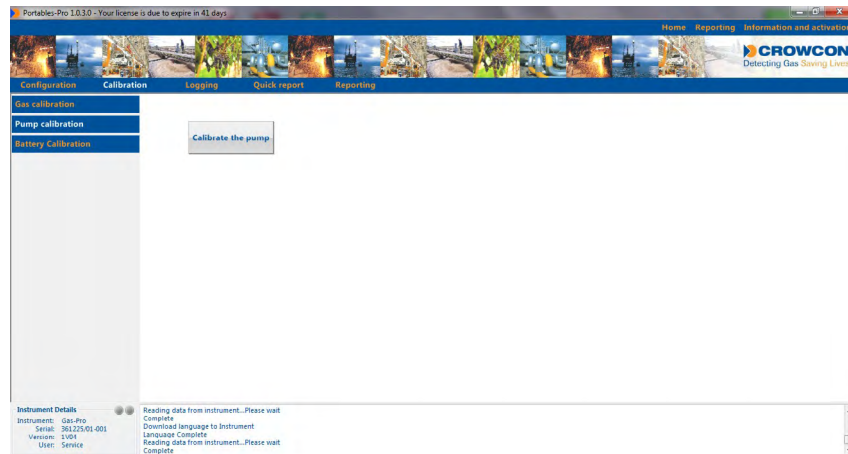
5.2 Pump calibration

A pump calibration is always required when the pump has been replaced, or if the pump stalls prematurely.

i This option is only visible when the unit is configured as 'pumped' (see [page 18](#)).

▶ Select **Pump calibration** from the Calibration menu, the following screen will be displayed:

Figure 20: Pump calibration screen



▶ Click on the **Calibrate the pump** button.

▶ When the calibration is finished, the result will be displayed at the base of the screen.

5.3 Battery calibration

The term 'Battery Age Scalar' refers to a variable that the instrument stores to gauge the age of the battery.

▶ Select **Battery calibration** from the Calibration menu, the following screen will be displayed:

Figure 21: Battery calibration screen



5.3.1 Initialise a new battery

If a completely new battery is placed into an instrument, this function will reset the battery age scalar stored in the instrument.

! Performing the initialise function on a *used* battery will cause irreparable damage to a device.

5.3.2 Extract battery age scalar

This should be used if a battery is to be removed from a device and placed into another device, or removed from an old board and written to a new board.

! Once extracted, the serial number and the date & time of data extraction will be displayed below the Extract battery age scalar button.

5.3.3 Write battery age scalar

This function should *only* be used to write the age scale data back to a PCB with the same battery to which the age scalar information relates.

! Writing an age scalar function from a different battery will cause irreparable damage to a device.

- ▶ Select the serial number from the drop down list, from which the battery originated. The date of extraction will be displayed below the drop down list.
- ▶ Check this information corresponds to the battery in the detector you are now configuring, click the "Write battery age scalar" button. The value will then be written to the device.

6. Logging

This feature allows extraction of stored event and gas reading data from a detector.

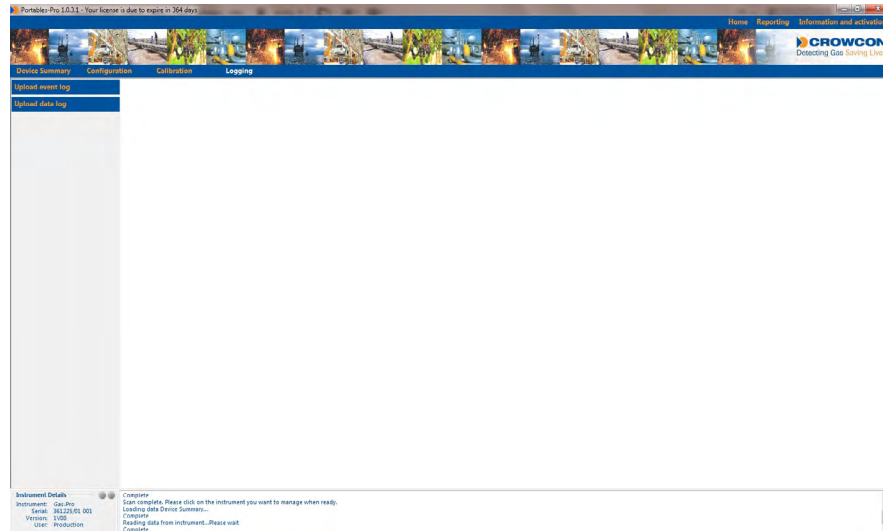
Data will then be stored on your PC, where it can be viewed at any time in the future without the detector being connected.

The Logging menu contains the following options:

- Upload event log (see [page 51](#))
- Upload gas log (see [page 52](#))

When the Logging menu is selected, the following screen will be displayed:

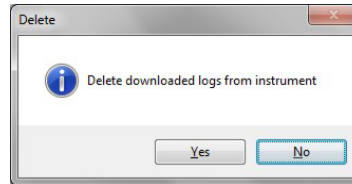
Figure 22: Logging menu screen



6.1 Upload event log

- ▶ Select **Upload event log** from the Logging menu. Once the data transfer is complete, the Delete confirmation dialog box will be displayed:

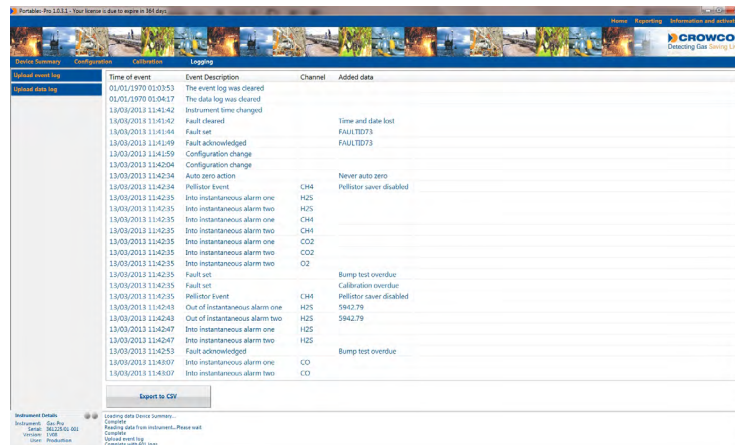
Figure 23: Delete log confirmation screen



- ▶ If the setting for deleting logs is not enabled (see [page 64](#)), you will not see the above dialog, and all logs will remain intact on the detector.

- ▶ Select **Yes** to delete the logs on the device (this will reduce loading time in the future) or **No** to retain them. The Upload event log screen will be displayed:

Figure 24: Upload event log screen

A screenshot of the 'Upload event log' screen in the software. The screen shows a table of event logs with columns for 'Time of event', 'Event Description', 'Channel', and 'Added data'. The table contains various entries such as 'The event log was cleared', 'Instrument time changed', 'Fault cleared', 'Fault set', 'Fault acknowledged', 'Configuration change', 'Auto zero action', 'Pellicitor event', 'Into instantaneous alarm one', 'Into instantaneous alarm two', 'Out of instantaneous alarm one', 'Out of instantaneous alarm two', 'Fault acknowledged', and 'Into instantaneous alarm one/two'. There are also buttons for 'Export to CSV' and 'Import from CSV'.

Time of event	Event Description	Channel	Added data
01/01/1970 01:03:53	The event log was cleared		
01/01/1970 01:04:17	The data log was cleared		
18/03/2013 11:41:42	Instrument time changed		
18/03/2013 11:41:42	Fault cleared		Time and date lost
18/03/2013 11:41:44	Fault set		FAULT073
18/03/2013 11:41:49	Fault acknowledged		FAULT073
18/03/2013 11:41:59	Configuration change		
18/03/2013 11:42:04	Configuration change		
18/03/2013 11:42:04	Auto zero action		Never auto zero
18/03/2013 11:42:04	Pellicitor event	CH4	Pellicitor saver disabled
18/03/2013 11:42:05	Into instantaneous alarm one	H2S	
18/03/2013 11:42:05	Into instantaneous alarm two	H2S	
18/03/2013 11:42:05	Into instantaneous alarm one	CH4	
18/03/2013 11:42:05	Into instantaneous alarm two	CH4	
18/03/2013 11:42:05	Into instantaneous alarm one	CO2	
18/03/2013 11:42:05	Into instantaneous alarm two	CO2	
18/03/2013 11:42:05	Into instantaneous alarm one	CO	
18/03/2013 11:42:05	Into instantaneous alarm two	CO	
18/03/2013 11:42:05	Fault set		Bump test overdue
18/03/2013 11:42:05	Fault set		Calibration overdue
18/03/2013 11:42:05	Pellicitor event	CH4	Pellicitor saver disabled
18/03/2013 11:42:03	Out of instantaneous alarm one	H2S	5842.79
18/03/2013 11:42:03	Out of instantaneous alarm two	H2S	5842.79
18/03/2013 11:42:07	Into instantaneous alarm one	H2S	
18/03/2013 11:42:07	Into instantaneous alarm two	H2S	
18/03/2013 11:42:07	Into instantaneous alarm one	CO	Bump test overdue
18/03/2013 11:42:07	Into instantaneous alarm two	CO	Bump test overdue

Use the scroll bars to the right and below the data fields to view the required events.

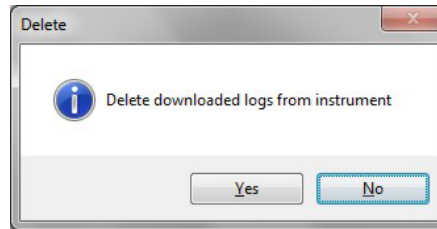
- ▶ To create a 'comma separated value' (CSV) file of the event data, click the **Export to CSV** button, name the file, navigate to the required destination and save it to disk.

Event data may include items such as outcome of calibrations, when the detector entered an alarm state, and various other events.

6.2 Upload data log

- ▶ Select **Upload data log** from the Logging menu. Once the data transfer is complete, the Delete confirmation dialog box will be displayed:
 - The data log will include gas readings from each channel, at an interval set on the Instrument settings page (see [page 19](#)).

Figure 25: Delete log confirmation screen



- If the setting for deleting logs is not enabled (see [page 64](#)), you will not see the above dialog, and all logs will remain intact on the detector.
 - ▶ Select **Yes** to delete the logs on the device (this will reduce loading time in the future) or **No** to retain them. The Upload data log screen will be displayed:

Figure 26: Upload data log screen



The graph shows all gas data which has just been downloaded from the detector. The x-axis shows date and time, the left y-axis shows % (bundling together both LEL and VOL), and the right y-axis shows ppm.

To the top-right of the graph is the information area. This is headed with the serial number of the detector, and the date/time that the data was retrieved from the device.

The gas readings box allows you to show or hide individual data series by clicking the checkboxes. By moving the mouse pointer over the graph area, the gas readings for each data series will be shown in the gas readings box, along with the date/time.

You may zoom in on the data by dragging a box with the box around the area you wish to zoom in on. Note that this will only zoom the x-axis; the y-axes must be zoomed using the axis controls area. Entering a value in any of the text boxes will adjust the graph immediately with your new values. Alternatively you may use the buttons in the axis controls area to zoom.

To reset an axis, use the reset x / % / ppm buttons. This will effectively undo all zoom operations so all data can be viewed.

I To create a 'comma separated value' (CSV) file of the event data, click the Export to CSV button, name the file, navigate to the required destination and save it to disk.

For a full explanation of the data log screen, see **Appendix A** on [page 66](#).

7. Device Summary

Selecting the Device Summary function will display the device summary screen as shown below:

This page is intended to give a quick overview of the setup of the detector, including its serial and software version, and which channels are present along with their alarm levels and calibration due dates.

Figure 27: Device summary screen

Portable Pro 1.0.11. Your license is due to expire in 364 days

Home Reporting Information and assistance

CROWCON
Decoding Gas Sensing Data

Device Summary Configuration Logging

Instrument identification: Gas-Pro

Software version: 1V08

Serial number: 981225/01 001

Name	Range	Units	Alarm one	Alarm two	Next bump test due	Next calibration due
CO	0 - 500	ppm	30	100	20 Mar 2013	09 Sep 2013
H2S	0 - 100	ppm	5	10	20 Mar 2013	09 Sep 2013
CH4	0 - 100	% FL	20	40	20 Mar 2013	09 Sep 2013
CO2	0 - 5	%VOL	0.5	1.5	20 Mar 2013	09 Sep 2013
O2	0 - 25	%VOL	19	23.5	21 Mar 2013	09 Sep 2013

Next calibration due: 09 Sep 2013

Instrument Details

Instrument: Gas-Pro	Sensing COB2
Serial: 981225/01 001	Sensing COB3
Version: 1V08	Configure
User: Standard	Start complete. Please click on the instrument you want to manage when ready.
	Loading data Device Summary...
	Complete

8. Reporting

The reporting function is used to view data which has previously been downloaded (or produced, in the case of calibration) from both the active detector and all other detectors that have been used with the software.

The user can view historical event data and gas logs, and also historical calibration reports.

The following options are available from the Reporting menu:

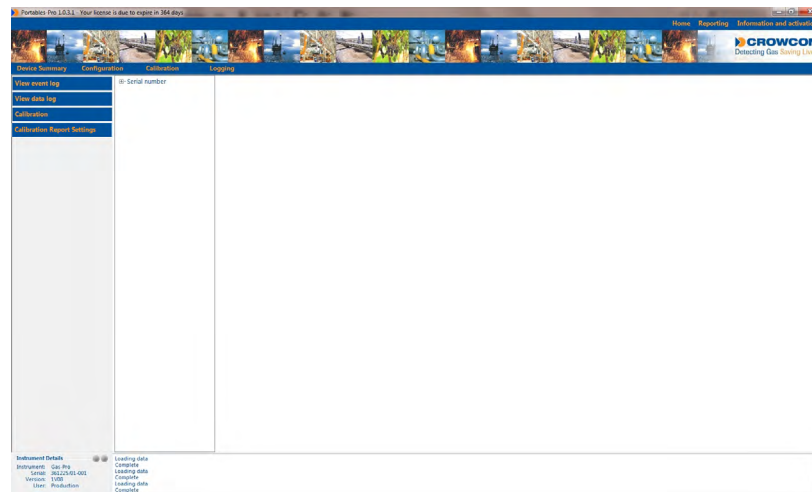
- View event log (see below)
- View data log (see [page 57](#))
- Calibration (see [page 59](#))
- Calibration report settings (see [page 61](#))

8.1 View event log

This function enables the event logs that have been previously downloaded from detectors to be viewed.

► Select **Reporting > View event log**. A blank event log screen will be displayed.

Figure 28: Blank event log screen



- ▶ Expand the serial number list by clicking on the '+' then select the serial number for the required detector. The fields to the right will be populated with the historic data (see below).

Figure 29: Populated event log screen

Serial number	Time of event	Event Description	Channel	Added data
601275848-001	01/01/1970 01:03:53	The event log was cleared		
	01/01/1970 01:04:17	The data log was cleared		
	13/03/2013 11:41:42	Instrument time changed		
	13/03/2013 11:41:42	Fault cleared		Time and date lost
	13/03/2013 11:41:44	Fault set		FAULTD73
	13/03/2013 11:41:49	Fault acknowledged		FAULTD73
	13/03/2013 11:41:59	Configuration change		
	13/03/2013 11:47:04	Configuration change		
	13/03/2013 11:42:34	Auto zero action		Never auto zero
	13/03/2013 11:42:34	Pellictor Event	CH4	Pellictor saver disabled
	13/03/2013 11:42:35	Into instantaneous alarm one	H2S	
	13/03/2013 11:42:35	Into instantaneous alarm two	H2S	
	13/03/2013 11:42:35	Into instantaneous alarm one	CH4	
	13/03/2013 11:42:35	Into instantaneous alarm two	CH4	
	13/03/2013 11:42:35	Into instantaneous alarm one	CO2	
	13/03/2013 11:42:35	Into instantaneous alarm two	CO2	
	13/03/2013 11:42:35	Into instantaneous alarm two	O2	
	13/03/2013 11:42:35	Fault set		Bump test overdue
	13/03/2013 11:42:35	Fault set		Calibration overdue
	13/03/2013 11:42:35	Pellictor Event	CH4	Pellictor saver disabled
	13/03/2013 11:42:43	Out of instantaneous alarm one	H2S	5942.79
	13/03/2013 11:42:43	Out of instantaneous alarm two	H2S	5942.79
	13/03/2013 11:42:47	Into instantaneous alarm one	H2S	
	13/03/2013 11:42:47	Into instantaneous alarm two	H2S	
	13/03/2013 11:42:47	Into instantaneous alarm one	H2S	
	13/03/2013 11:42:47	Into instantaneous alarm two	H2S	
	13/03/2013 11:42:51	Fault acknowledged		Bump test overdue
	13/03/2013 11:43:07	Into instantaneous alarm one	CO	
	13/03/2013 11:43:07	Into instantaneous alarm two	CO	
	13/03/2013 11:43:10	Fault acknowledged		Calibration overdue
	13/03/2013 11:43:23	Out of instantaneous alarm one	CO	2871.84
	13/03/2013 11:43:23	Out of instantaneous alarm two	CO	2871.84
	13/03/2013 11:43:23	Out of instantaneous alarm one	H2S	5947.36
	13/03/2013 11:43:23	Out of instantaneous alarm two	H2S	5947.36
	13/03/2013 11:43:25	Into instantaneous alarm one	H2S	

- ▶ All events which have been retrieved from the selected detector will be shown in the list view. These will include events such as when the detector entered alarm states, when calibrations occurred and other information.

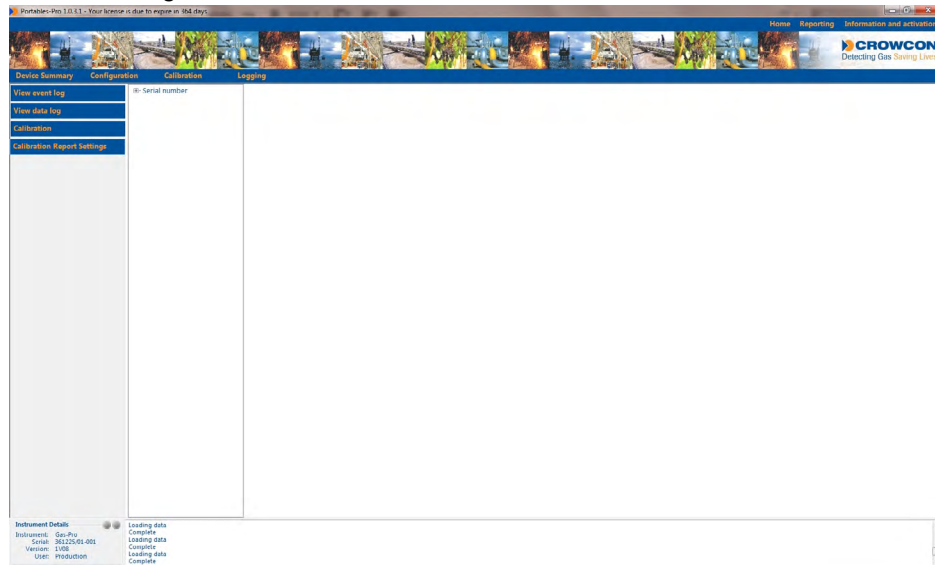
- ▶ To create a 'comma separated value' (CSV) file click the **Export to CSV** button, name the file, navigate to the required destination and save it to disk.

8.2 View data log

This function enables the data logs that have been previously downloaded from detectors to be viewed.

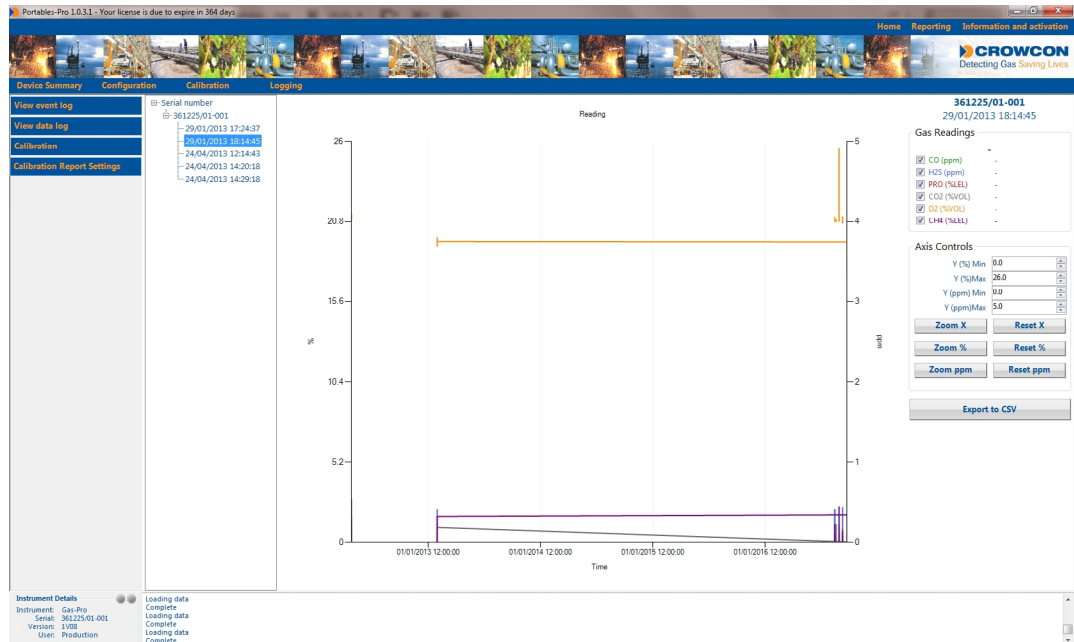
- ▶ Select **Reporting > View data log**. A blank event log screen will be displayed.

Figure 30: Blank data log screen



- ▶ Expand the serial number list by clicking on the '+', select the serial number for the required detector and then select the required date. The graph to the right will now display the gas levels recorded for the selected date (see [Figure 31](#)).

Figure 31: Populated data log screen



This graph is identical in function to the graph seen on the logging page when downloading gas logs (see [page 53](#)).

To create a 'comma separated value' (CSV) file click the Export to CSV button, name the file, navigate to the required destination and save it to disk.

For a full explanation of the data log screen, see **Appendix A** on [page 66](#).

8.3 Calibration

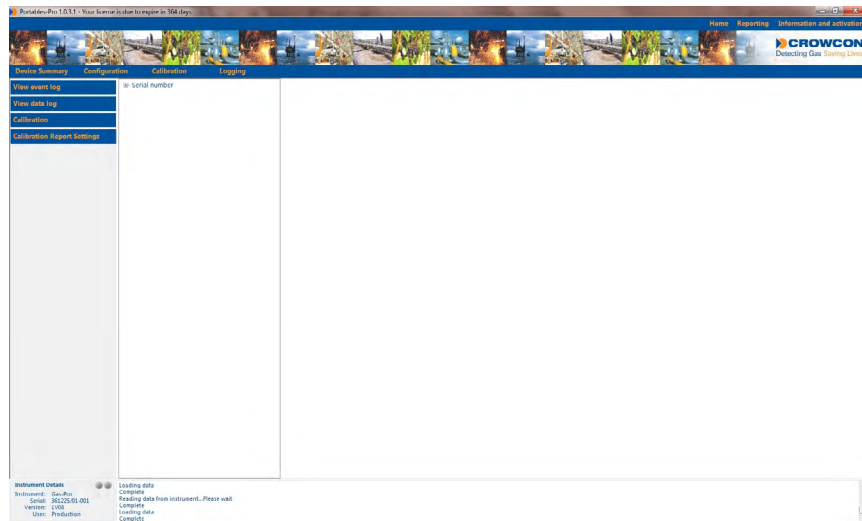
This page allows you to view calibration reports which have been saved during the calibration process.

See [page 37](#) for more information on performing calibrations and creating these reports.

The reports contain information on the outcome of calibrations on each channel, and basic information on the configuration of the detector.

► Select **Reporting > Calibration**. The screen below will be displayed.

Figure 32: Blank calibration report screen



- ▶ Expand the calibration reports list by clicking on the '+'. The serial number list will be displayed.
- ▶ Expand the required serial number by clicking on the '+' next to it. A date list will be displayed.
- ▶ Click on the required date. The calibration report for the selected date will be displayed (see below). Use the scroll bar to read the complete report.
- ▶ You may also print the report by clicking the **Print** button at the top of the report.

Some information on the calibration report must be entered on the Calibration report settings page (see [page 61](#)).

Figure 33: Populated calibration report screen

The screenshot displays the 'Gas-Pro Calibration and Configuration Report' screen. The interface includes a navigation menu on the left with options like 'Device summary', 'Configuration', 'Calibration', and 'Logging'. The main content area is divided into sections for company information, calibration settings, and a table of calibration data.

Company Information:

- Enter your company name
- 1st line address
- 2nd line address
- 3rd line address
- Enter postcode
- Telephone
- Mobile
- Web

Calibration Settings:

- Method of calibration
- Enter text here
- Enter text here
- Enter text here

Calibration Data Table:

Printed on	24/04/2013	Cal date	24/04/2013 15:47:55
Serial number	361225/01-001	Result	FAH FD
Name	CO	Pre cal reading	0
Units	ppm	Post cal reading	0
Calibration level	200	Last calibration	24/04/2013
Alarm 1 Level	50	Alarm 2 Level	100
Result	Gain low	Next calibration	24/04/2013
Name	H2S	Pre cal reading	0
Units	ppm	Post cal reading	0
Calibration level	25	Last calibration	24/04/2013
Alarm 1 Level	5	Alarm 2 Level	10
Result	Gain low	Next calibration	24/04/2013
Name	CH4	Pre cal reading	1
Units	% LEL	Post cal reading	1

Instrument Details:

- Instrument: Gas-Pro
- Serial: 361225/01-001
- Version: 1.008
- User: Production

Loading data:

- Complete
- Complete
- Reading data from instrument...Please wait
- Complete
- Loading data
- Complete

8.4 Calibration report settings

This function enables the statement of conformity and application owner details of calibration reports to be entered/edited.

- ▶ Select **Reporting > Calibration report settings**. The screen below will be displayed.

Figure 34: Calibration settings screen

The screenshot shows a web-based interface for setting calibration report details. The browser title is 'Portables-Pro 1.0.2.1 - Your license is due to expire in 359 days'. The navigation bar includes 'Home', 'Reporting', and 'Information and activation'. The main menu has 'Device Summary', 'Configuration', 'Calibration', and 'Logging'. The 'Calibration' section is active, showing a sidebar with 'View event log', 'View data log', 'Calibration', and 'Calibration Report Settings'. The main content area is divided into two columns: 'Statement of conformity' and 'Application owner details'. The 'Statement of conformity' column has three lines for 'Line 1', 'Line 2', and 'Line 3', each with a 'Conformity statement' text area. Below these are two text areas for 'Message for Flammable sensor ATEX' and 'Message for Flammable sensor IIE'. The 'Application owner details' column contains fields for 'Company name', 'Address line 1', 'Address line 2', 'Address line 3', 'Address', 'Postcode', 'Telephone', 'Telex', 'E-Mail', 'Web', 'Web site', 'Company logo', and 'Logo'. A 'Save' button is located at the bottom of the form. At the bottom of the screen, there are two tabs: 'Instrument Details' and 'Scanning CODES'. The 'Instrument Details' tab is active, showing fields for 'Instrument', 'Cat No', 'Serial', 'Version', and 'Unit', with a 'Production' button. The 'Scanning CODES' tab is also visible, showing 'Complete', 'Scan complete', and 'Complete' buttons, with a note: 'Please click on the instrument you want to manage when ready'.

- ▶ Updating these settings will change the text which is shown on all generated calibration reports. Be sure to keep these details up to date with your company contact details and logo.
- ▶ Make the additions or alterations as required and then click the **Save** button.

9. Information and activation

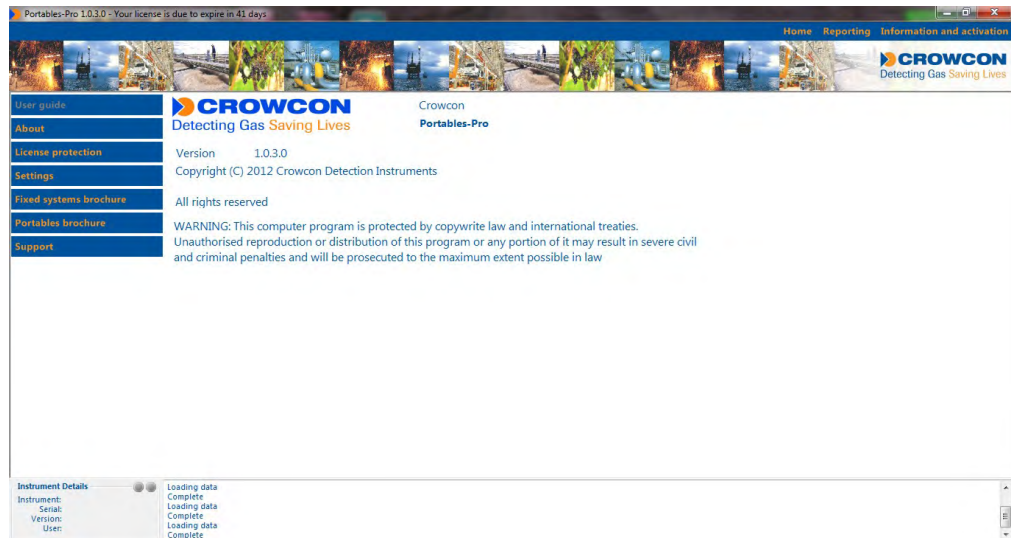
The following options are available from the Information and activation menu:

- About (see below)
- License protection (see [page 63](#))
- Settings (see [page 64](#))
- Fixed systems brochure (see [page 65](#))
- Portables brochure (see [page 65](#))
- Support (see [page 65](#))

9.1 About

When this option is selected, a screen showing the current software version and copyright information will be displayed (see below).

Figure 35: About screen

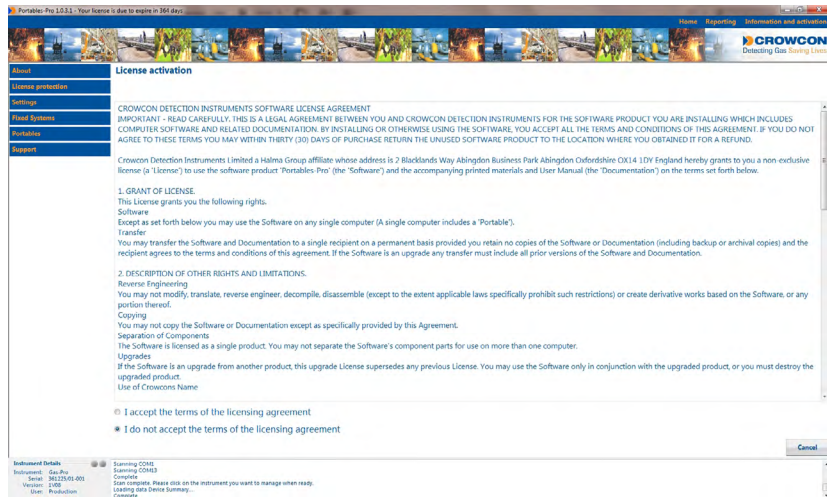


9.2 License protection

The license protection function enables the software to be activated or the license type changed as follows:

- ▶ Select License protection from the Applications settings menu. The screen shown below will be displayed.

Figure 36: License protection screen



- ▶ Either click on the **I accept the terms of the license agreement** radio button and then click the **Next** button, or just click the **Cancel** button to abort the procedure.
- ▶ If you accepted the terms of the license agreement, follow the on screen instructions in order to receive your activation code. When you have received your code, click the **Next** button, enter your activation code in the field at the centre of the screen and then click the **Finish** button.
- ▶ The software is now ready for use.

The activation code you receive will reflect the user level of your license: Standard, Calibration Technician, Service or Fleet Manager.

9.3 Settings

9.3.1 Database location

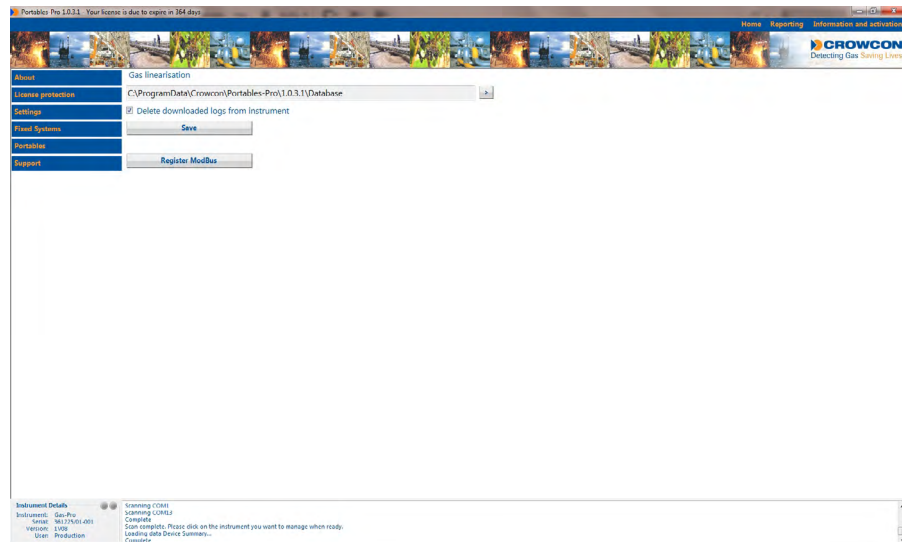
If you wish to use a shared database between several PCs, on a network drive for example, then you may modify the location of the database here.

If a Portables-Pro database is present in the directory you choose, it shall be used to store logs, calibration certificates etc. If there is no database in the target directory, Portables Pro shall create a new one.

This function enables the database settings to be changed as follows:

- ▶ Select Settings from the menu. The screen shown below will be displayed.

Figure 37: Database settings screen



- ▶ Use the > button to browse to the destination on disk where the database will be stored.
- ▶ The **Delete downloaded logs from instrument** checkbox enables the software to delete logs from instruments. If it is checked, you will be prompted whether you would like to delete logs from an instrument after the transfer is completed. If it is unchecked, all logs will be left on the instrument.
- ▶ **By not deleting logs, a large accumulation of data will build up on the device, meaning download times will be greatly increased.**

9.3.2 Register Modbus

Some pieces of **Crowcon** software may install older versions of some files associated with communicating with **Crowcon** devices. These older versions are not compatible with some of the functions within **Portables-Pro**, but the new version is backward compatible with old software.

Should a user be experiencing issues with communications when installing other **Crowcon** software after **Portables Pro**, they may be advised by tech support to use the **Register Modbus** function to ensure that their computer is using the most up-to-date files associated with communication.

9.4 Fixed systems

When this option is selected, the fixed system product names that have information available will be displayed. Select a product and the relevant datasheet will be displayed.

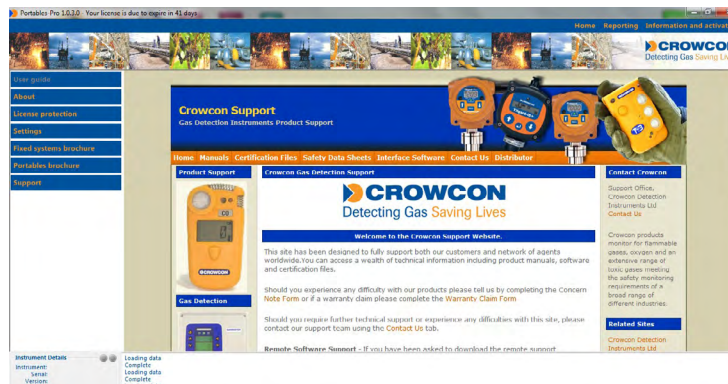
9.5 Portables

When this option is selected, the portable product names that have information available will be displayed. Select a product and the relevant datasheet will be displayed.

9.6 Support

When this option is selected, the following screen will be displayed:

Figure 38: Support screen



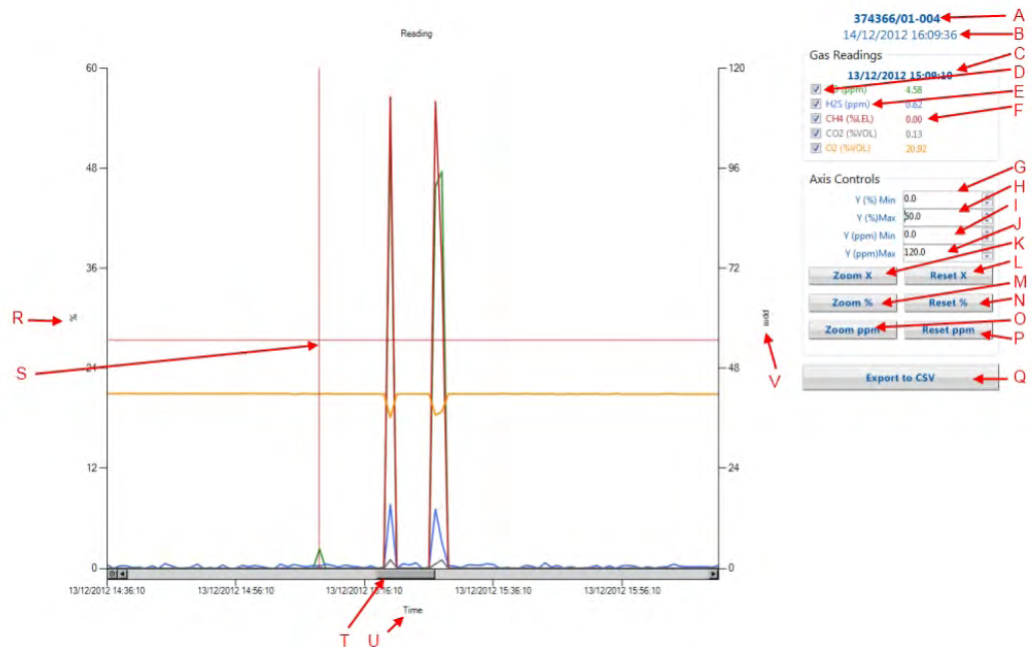
Use the screen to navigate to the support you require.

Fixed Systems / Portables / Support all require an internet connection to be available.

Appendix A: Data logging graph

The data logging screen has the following functions:

Figure 39: Datalogging screen details



- A: The serial number of the instrument whose date we are viewing.
- B: The date and time that the data we are viewing was retrieved.
- C: The date and time of the position of the mouse pointer.
- D: A checkbox for enabling/disabling the associated dataseries for viewing.
- E: The gas name and unit of the dataseries.
- F: The gas level at the date / time specified in 'C'.
- G: The minimum value visible on the % axis.
- H: The maximum value visible on the % axis.

I: The minimum value visible on the ppm axis.

J: The maximum value visible on the ppm axis.

K: Zoom in on the X (time) axis.

L: Reset the X (time) axis to view all the data.

M: Zoom data plotted on the % axis.

N: Reset the % axis to the original values*.

O: Zoom data plotted on the ppm axis.

P: Reset the ppm axis to the original values*.

Q: Export all data on the chart to a csv file.

R: The % axis.

S: The position of the mouse.

T: A scrollbar that appears when zooming in. This may be dragged to scroll through the datapoints.

U: The X (time) axis.

V: The ppm axis.

*The original values for the % and ppm axes may not be the same for each set of data that is viewed. This is to ensure that extreme values do not distort the graph and render it unusable.

Appendix B: Fleet Management download table

The table below indicates orange for the values **excluded** during a Fleet Management Download:

Value	Excluded
Identification	
Serial Number	
Build Date	
Part Number	
Backlight Control	
Bump Call interval	
Bump Lock	
Bump Test Interval Intermittent Ground	
Calibration Due Date	
Calibration Due Lockout	
Confidence Enable	
Confidence Interval	
Display Contrast	
Global Bump Test Enable	On
Global Follow On Cal Enable	
Instrument Time	
Logging Interval	60
Max Pump Current	
OEM Code	
Pellistor Saver Disable	
Pellistor Saver Level	
Pumped	
Pump Stall Current	✖
Splash Screen One Enable	
Splash Screen One Image Index	
Splash Screen Two Image Index	
Splash Screen One Text One	
Splash Screen One Text Two	
Splash Screen Two Enable	
Splash Screen Two Text One	
Splash Screen Two Text Two	

Value	Excluded
Startup Zero Action	
Prevent Switch Off In Alarm	
User Config Adjust	
Zero WBG Enable	
Selected User	
User One	
User Two	
User Three	
User Four	
User Five	
Positive Safety	
Alarm 1 Has Occurred	
Alarm 2 Has Occurred	
Battery Is Low	
Default Safety	
LTWA Has Occurred	
Sensor Out Of Bump Test Period	
Sensor Out Of Cal Period	
STWA Has Occurred	
Sensor Overrange	
Bay	
Sensor Type	
Sensor Manufacturer	
Sensor Model	
Sensor Life	
Channel	
Auto Zero Span Level	
Log Threshold	
Alarm 1 Latching	
Alarm 1 Level	
Alarm 1 Type	
Alarm 2 Level	
Alarm 2 Type	
Alarm LTWA	

Value	Excluded
Alarm STWA	
Bump Gas Level	
Bump Stabalise Time	
Bump Test Enable	
Bump Test Group	
Bump Test Limits	
Cal Ambient Level	
Calibration Interval	
Calibration Level	
Cal Zero Level	
Damping	
Display Name	
Display Units	
Follow On Cal Enable	
Range	
Sensor ID	
Startup Time	
Zero Suppression	
Zero WBG Capable	
Linearisation Data	
Temperature Comp Data	
Ideal Gain	
Gain Rise Factor	
Ideal Gain Limit	
Limit Gain Factor	
Cal Original Gain	
User Gain	
Switch Gain	
ADC Gain	
Load Switch	
Biased	
Cal Due Date	
Bump Due Date	
Battery Age Scalar	

Appendix C: License level functions

The table below indicates orange for the functions **available** for each license level:

Functionality	Service	Fleet	Calibration Technician	Standard
Configuration Page	Orange	Orange	Orange	Orange
Instrument Settings Page	Orange	Orange	Orange	
Serial Number	Orange			
Confidence Strategy	Orange	Orange	Orange	
Confidence Interval	Orange		Orange	
Action on Startup	Orange			
Bump Test Intermittent Interval	Orange		Orange	
Bump Calibration Interval	Orange		Orange	
Next Calibration Due				
Lock on Calibration Due	Orange	Orange	Orange	
Prevent Switch Off in Alarm	Orange		Orange	
Enable Bump Testing	Orange		Orange	
Calibrate After Bump Fail	Orange		Orange	
Allow User Config Adjustment	Orange		Orange	
Pumped Strategy	Orange			
Lock on Bump Failure	Orange	Orange	Orange	
Splash 2 Enabled	Orange			
Backlight Control	Orange		Orange	Orange
Threshold Logging Enabled	Orange		Orange	Orange
Log Interval	Orange		Orange	Orange
Sensors Page	Orange	Orange	Orange	Orange
Sensor Type	Orange			
Channel ID				
Gas	Orange			
Display Name	Orange	Orange	Orange	
Display Units	Orange			
Bump Test Enabled	Orange	Orange	Orange	
Bump Test Timeout	Orange			
Bump Test Level	Orange		Orange	
Bump Test +/- Deviation	Orange	Orange	Orange	

Functionality	Service	Fleet	Calibration Technician	Standard
Bump Test Group				
Enable Follow-on Cal				
Correction Factor				
Zero Gas Capable				
Init Gain/Bias				
Startup Stability Time				
Alarm 1 Threshold				
Alarm 1 Direction				
Alarm 1 Latching				
Alarm 2 Threshold				
Alarm 2 Direction				
STWA Threshold				
LTWA Threshold				
Background Gas Level				
Calibration Interval				
Threshold Value				
Positive Safety Page				
Reset Positive Safety State				
Delete Profile from Database				
Save Profile to Database				
Save Profile to Instrument				
Instrument Customisation Page				
Save Splash 2 Image to Instrument				
Save Splash message to Instrument				
Save Sounder config to Instrument				
User Configuration Page				
Change active user				
Change usernames				
Save config to Instrument				
Language Options Page				
Download language to Instrument				
Set Instrument Date and Time				
Fleet Management Page				

Functionality	Service	Fleet	Calibration Technician	Standard
Save config to Database				
Copy config to Instrument				
Instrument Upgrade Page				
Save config to Database				
Write config to Instrument				
Calibration Page				
Gas Calibration Page				
View Output Graph				
Initial Zero				
Field Zero				
Initial Cal				
Field Cal				
Speedy Bump				
Smart Bump				
Save Cal Data				
Print Cal Report				
Mute				
Log to CSV				
Cal Due Date Controls				
Pump Calibration Page				
Battery Calibration Page				
Logging Page				
Upload Event Log				
Upload Data Log				
Device Summary Page				
Reporting Page				
View Event Logs				
View Data Logs				
View Calibration Reports				
Change Cal Report Settings				

Appendix D: PID Correction Factors

Volatile Gas	Ionisation Potential	Crowcon Correction Factor, 10.6ev Lamp only
Acetaldehyde C ₂ H ₄ O	10.23	4.86
Acetone C ₃ H ₆ O	9.69	0.72
Acrolein C ₃ H ₄ O	10.22	4.00
Allyl alcohol C ₃ H ₆ O	9.63	2.07
Allyl chloride C ₃ H ₅ Cl	10.05	4.50
Ammonia H ₃ N	10.18	8.50
Amyl acetate, n- C ₇ H ₁₄ O ₂	9.9	1.80
Amyl alcohol C ₅ H ₁₂ O	10	3.20
Aniline C ₆ H ₇ N	7.7	0.50
Anisole C ₇ H ₈ O	8.21	0.47
Asphalt, petroleum fumes	9	1.00
Benzaldehyde C ₇ H ₆ O	9.49	0.86
Benzene C ₆ H ₆	9.24	0.50
Benzenethiol C ₆ H ₅ SH	8.32	0.70
Benzonitrile C ₇ H ₅ N	9.62	0.71
Benzyl alcohol C ₇ H ₈ O	8.26	1.25
Benzyl chloride C ₇ H ₇ Cl	9.14	0.55
Benzyl formate C ₈ H ₈ O ₂	9.32	0.77
Biphenyl C ₁₂ H ₁₀	8.23	0.40
Bis(2,3-epoxypropyl) ether C ₆ H ₁₀ O ₃	9.6	3.00
Bromobenzene C ₆ H ₅ Br	8.98	0.70
Bromoethane C ₂ H ₅ Br	10.29	5.00
Bromoethyl methyl ether, 2- C ₃ H ₇ OBr	10	2.50
Bromoform CHBr ₃	10.48	2.80
Bromopropane, 1- C ₃ H ₇ Br	10.18	1.30
Butadiene C ₄ H ₆	9.07	0.83
Butadiene diepoxide, 1,3- C ₄ H ₆ O ₂	10	4.00

Volatile Gas	Ionisation Potential	Crowcon Correction Factor, 10.6ev Lamp only
Butanol, 1- C ₄ H ₁₀ O	10.04	4.01
Butene, 1- C ₄ H ₈	9.58	1.00
Butoxyethanol, 2- C ₆ H ₁₄ O ₂	8.6	1.10
Butyl acetate, n- C ₆ H ₁₂ O ₂	10	2.42
Butyl acrylate, n- C ₇ H ₁₂ O ₂	8.6	1.50
Butyl mercaptan C ₄ H ₁₀ S	9.15	0.54
Butylamine, 2- C ₄ H ₁₁ N	8.6	0.90
Butylamine, n- C ₄ H ₁₁ N	8.71	1.00
Camphene C ₁₀ H ₁₆	8.1	0.45
Carbon disulfide CS ₂	10.08	1.40
Carbon tetrabromide CBr ₄	10.31	3.00
Chlorine dioxide ClO ₂	10.36	1.00
Chloro-1,3-butadiene, 2- C ₄ H ₅ Cl	8.79	3.20
Chlorobenzene C ₆ H ₅ Cl	9.07	0.45
Chloroethyl methyl ether, 2- C ₃ H ₇ ClO	9	2.60
Chlorotoluene, o- C ₇ H ₇ Cl	8.83	0.45
Chlorotoluene, p- C ₇ H ₇ Cl	8.69	0.50
Cresol, m- C ₇ H ₈ O	8.97	1.05
Cresol, o- C ₇ H ₈ O	8.97	1.05
Cresol, p- C ₇ H ₈ O	8.97	1.05
Crotonaldehyde C ₄ H ₆ O	9.73	1.00
Cumene C ₉ H ₁₂	8.75	0.59
Cyclohexane C ₆ H ₁₂	9.86	1.16
Cyclohexanol C ₆ H ₁₂ O	10	2.91
Cyclohexanone C ₆ H ₁₀ O	9.4	1.04
Cyclohexene C ₆ H ₁₀	8.95	0.75
Cyclohexylamine C ₆ H ₁₃ N	8.37	0.98
Cyclopentane C ₅ H ₁₀	10.52	4.00
Decane, n- C ₁₀ H ₂₂	9.65	1.04

Volatile Gas	Ionisation Potential	Crowcon Correction Factor, 10.6ev Lamp only
Diacetone alcohol C ₆ H ₁₂ O ₂	9	0.80
Dibromochloromethane CHBr ₂ Cl	10.59	10.00
Dibromoethane 1,2- C ₂ H ₄ Br ₂	9.45	2.00
Dichloro-1-propene, 2,3- C ₃ H ₄ Cl ₂	10.5	1.40
Dichlorobenzene o- C ₆ H ₄ Cl ₂	9.06	0.50
Dichloroethene, 1,1- C ₂ H ₂ Cl ₂	10	0.95
Dichloroethene, cis-1,2- C ₂ H ₂ Cl ₂	9.66	0.80
Dichloroethene, trans-1,2- C ₂ H ₂ Cl ₂	9.65	0.70
Dichloroethylene 1,2- C ₂ H ₂ Cl ₂	9.65	0.75
Dicyclopentadiene C ₁₀ H ₁₂	8	0.81
Diesel Fuel	8	0.75
Diethyl ether C ₄ H ₁₀ O	9.53	0.88
Diethyl sulphide C ₄ H ₁₀ S	8.43	0.50
Diethylamine C ₄ H ₁₁ N	8.01	1.40
Diethylaminopropylamine, 3- C ₇ H ₁₈ N ₂	9	0.80
Diisobutylene C ₈ H ₁₆	8.8	0.64
Diisopropyl ether C ₆ H ₁₄ O	9.2	0.68
Diisopropylamine C ₆ H ₁₅ N	7.73	0.70
Diketene C ₄ H ₄ O ₂	9.6	2.20
Dimethoxymethane C ₃ H ₈ O ₂	9.7	1.40
Dimethyl cyclohexane, 1,2- C ₈ H ₁₆	9.41	1.05
Dimethyl disulphide C ₂ H ₆ S ₂	7.4	0.23
Dimethyl ether C ₂ H ₆ O	10.03	1.30
Dimethyl sulphide C ₂ H ₆ S	8.69	0.50
Dimethylamine C ₂ H ₇ N	8.24	1.40
Dimethylaniline, NN- C ₈ H ₁₁ N	7.12	0.60
Dimethylethylamine, NN- C ₄ H ₁₁ N	9	0.80
Dimethylformamide C ₃ H ₇ NO	9.13	0.90
Dimethylheptan-4-one, 2,6- C ₉ H ₁₈ O	9.04	0.80

Volatile Gas	Ionisation Potential	Crowcon Correction Factor, 10.6ev Lamp only
Dimethylhydrazine, 1,1- C ₂ H ₈ N ₂	8.05	1.00
Dioxane 1,2- C ₄ H ₈ O ₂	9.2	1.50
Dioxane 1,4- C ₄ H ₈ O ₂	9.13	1.50
Diphenyl ether C ₁₂ H ₁₀ O	8.09	0.80
Divinylbenzene C ₁₀ H ₁₀	8.2	0.40
Epichlorohydrin C ₃ H ₅ ClO	10.2	8.00
Epoxypropyl isopropyl ether, 2,3- C ₆ H ₁₂ O ₂	10	1.10
Ethanol C ₂ H ₆ O	10.43	8.72
Ethanolamine C ₂ H ₇ NO	10.47	3.00
Ethoxyethyl acetate, 2- C ₆ H ₁₂ O ₃	10	3.63
Ethyl acetate C ₄ H ₈ O ₂	10.01	3.63
Ethyl acrylate C ₅ H ₈ O ₂	10.3	2.00
Ethyl benzene C ₈ H ₁₀	8.76	0.54
Ethyl butyrate C ₆ H ₁₂ O ₂	9.9	0.95
Ethyl hexyl acrylate, 2- C ₁₁ H ₂₀ O ₂	9	1.00
Furfural C ₅ H ₄ O ₂	9.21	1.39
Furfuryl alcohol C ₅ H ₆ O ₂	9.9	2.00
Gasoline vapors	9.9	1.05
Gasoline vapors 92 octane	9.9	0.80
Glutaraldehyde C ₅ H ₈ O ₂	9.6	0.90
Heptan-2-one C ₇ H ₁₄ O	9.33	0.73
Heptan-3-one C ₇ H ₁₄ O	9.02	0.75
Heptane n- C ₇ H ₁₆	9.92	2.06
Hexan-2-one C ₆ H ₁₂ O	9.34	0.80
Hexane n- C ₆ H ₁₄	10.13	3.28
Hexene, 1- C ₆ H ₁₂	9.44	0.90
Hydrazine H ₄ N ₂	8.93	3.00
Hydrogen sulfide H ₂ S	10.46	4.00
Hydroquinone C ₆ H ₆ O ₂	7.94	0.80

Volatile Gas	Ionisation Potential	Crowcon Correction Factor, 10.6ev Lamp only
Iminodi(ethylamine) 2,2- C ₄ H ₁₃ N ₃	9	0.90
Iminodiethanol 2,2'- C ₄ H ₁₁ NO ₂	9	1.60
Indene C ₉ H ₈	8.81	0.46
Iodine I ₂	9.31	0.15
Iodoform CHI ₃	9.25	1.50
Iodomethane CH ₃ I	9.54	0.40
Isobutane C ₄ H ₁₀	10.57	8.00
Isobutanol C ₄ H ₁₀ O	10.12	3.50
Isobutyl acetate C ₆ H ₁₂ O ₂	9.9	2.26
Isobutyl acrylate C ₇ H ₁₂ O ₂	9.5	1.30
Isobutylene C ₄ H ₈	9.24	1.00
Isobutyraldehyde C ₄ H ₈ O	9	1.20
Isooctane C ₈ H ₁₈	9.86	1.09
Isopentane C ₅ H ₁₂	10.32	6.00
Isoprene C ₅ H ₈	8.85	0.70
Isopropanol C ₃ H ₈ O	10.17	4.35
Isopropyl acetate C ₅ H ₁₀ O ₂	9.99	2.20
Isopropyl chloroformate C ₄ H ₇ O ₂ Cl	10.2	1.60
Jet Fuel JP-4	9	0.75
Jet Fuel JP-5	9	0.65
Jet Fuel JP-8	9	0.65
Kerosene	8	0.83
Ketene C ₂ H ₂ O	9.617	3.00
Mesitylene C ₉ H ₁₂	8.41	0.34
Methacrylic acid C ₄ H ₆ O ₂	10.15	2.30
Methoxyethanol, 2- C ₃ H ₈ O ₂	9.6	2.70
Methoxyethoxyethanol, 2- C ₅ H ₁₂ O ₃	10	1.40
Methoxymethylethoxy-2-propanol C ₇ H ₁₆ O ₃	9.3	1.30
Methoxypropan-2-ol C ₄ H ₁₀ O ₂	9.4	3.00

Volatile Gas	Ionisation Potential	Crowcon Correction Factor, 10.6ev Lamp only
Methoxypropyl acetate C ₆ H ₁₂ O ₃	9	1.20
Methyl acetate C ₃ H ₆ O ₂	10.27	5.19
Methyl acrylate C ₄ H ₆ O ₂	10.25	3.40
Methyl bromide CH ₃ Br	10.54	1.90
Methyl cyanoacrylate C ₅ H ₅ O ₂ N	10	0.77
Methyl ethyl ketone C ₄ H ₈ O	9.51	0.77
Methyl isobutyl ketone C ₆ H ₁₂ O	9.3	0.80
Methyl isothiocyanate C ₂ H ₃ NS	9.25	0.60
Methyl mercaptan CH ₄ S	9.44	0.70
Methyl methacrylate C ₅ H ₈ O ₂	9.7	1.60
Methyl propyl ketone C ₅ H ₁₀ O	9.39	0.79
Methyl sulphide C ₂ H ₆ S	8.69	0.50
Methyl t-butyl ether C ₅ H ₁₂ O	9.24	0.80
Methyl-2-propen-1-ol, 2- C ₄ H ₈ O	9.6	1.06
Methyl-2-pyrrolidinone, N- C ₅ H ₉ NO	9.17	0.90
Methyl-5-hepten-2-one, 6- C ₈ H ₁₄ O	9.4	0.80
Methylamine CH ₅ N	8.97	1.40
Methylbutan-1-ol, 3- C ₅ H ₁₂ O	9.8	3.40
Methylcyclohexane C ₇ H ₁₄	9.85	1.10
Methylcyclohexanol, 4- C ₇ H ₁₄ O	9.8	2.40
Methylcyclohexanone 2- C ₇ H ₁₂ O	9.2	0.95
Methylheptan-3-one, 5- C ₈ H ₁₆ O	9.1	0.75
Methylhexan-2-one, 5- C ₇ H ₁₄ O	9.28	0.75
Methylhydrazine CH ₆ N ₂	8	1.30
Methylpent-3-en-2-one, 4- C ₆ H ₁₀ O	9	0.72
Methylpentan-2-ol, 4- C ₆ H ₁₄ O	9.8	2.80
Methylpentane-2,4-diol, 2- C ₆ H ₁₄ O ₂	9	4.00
Methylpropan-2-ol, 2- C ₄ H ₁₀ O	9.7	3.50
Methylstyrene C ₉ H ₁₀	8.2	0.53

Volatile Gas	Ionisation Potential	Crowcon Correction Factor, 10.6ev Lamp only
Mineral spirits	9	0.80
Naphthalene C ₁₀ H ₈	8.14	0.44
Nitric oxide NO	9.27	8.00
Nitroaniline 4- C ₆ H ₆ N ₂ O ₂	8.85	0.80
Nitrobenzene C ₆ H ₅ NO ₂	9.92	1.70
Nitrogen trichloride NCl ₃	10.22	1.00
Nonane, n- C ₉ H ₂₀	9.72	1.27
Octane, n- C ₈ H ₁₈	9.8	1.59
Octene, 1- C ₈ H ₁₆	9.43	0.70
Pentan-2-one C ₅ H ₁₀ O	9.38	0.79
Pentan-3-one C ₅ H ₁₀ O	9.31	0.80
Pentandione, 2,4- C ₅ H ₈ O ₂	8.85	0.75
Pentane, n- C ₅ H ₁₂	10.35	7.89
Phenol C ₆ H ₆ O	8.51	1.20
Phenyl-2,3-epoxypropyl ether C ₉ H ₁₀ O ₂	8.6	0.80
Phenylenediamine, p- C ₆ H ₈ N ₂	6.89	0.60
Picoline, 3- C ₆ H ₇ N	9.04	0.90
Pinene, alpha C ₁₀ H ₁₆	8.07	0.32
Pinene, beta C ₁₀ H ₁₆	8.1	0.32
Piperylene C ₅ H ₈	8.6	0.67
Propene C ₃ H ₆	9.73	1.40
Propionaldehyde C ₃ H ₆ O	9.95	1.69
Propionic acid C ₃ H ₆ O ₂	10.24	8.00
Propyl acetate, n- C ₅ H ₁₀ O ₂	10.04	2.50
Propylene oxide C ₃ H ₆ O	10.22	7.00
Propyleneimine C ₃ H ₇ N	9	1.30
Pyridine C ₅ H ₅ N	9.25	0.75
Pyridylamine 2- C ₅ H ₆ N ₂	9	0.80
Styrene C ₈ H ₈	8.4	0.44

Volatile Gas	Ionisation Potential	Crowcon Correction Factor, 10.6ev Lamp only
Terpinolene C ₁₀ H ₁₆	8.1	0.47
Tert-butanol C ₄ H ₁₀ O	9.8	2.63
Tetrabromoethane, 1,1,2,2- C ₂ H ₂ Br ₄	10	2.00
Toluene C ₇ H ₈	8.82	0.51
Toluene-2,4-diisocyanate C ₉ H ₆ N ₂ O ₂	8.82	1.60
Trichloroethylene C ₂ HCl ₃	9.45	0.62
Triethylamine C ₆ H ₁₅ N	7.5	0.90
Trimethylamine C ₃ H ₉ N	7.82	0.50
Trimethylbenzene mixtures C ₉ H ₁₂	8.41	0.34
Trimethylbenzene, 1,3,5- C ₉ H ₁₂	8.39	0.34
Turpentine C ₁₀ H ₁₆	8	0.60
Undecane, n- C ₁₁ H ₂₄	9.56	0.92
Vinyl acetate C ₄ H ₆ O ₂	9.19	1.10
Vinyl bromide C ₂ H ₃ Br	9.8	1.00
Vinyl chloride C ₂ H ₃ Cl	9.99	2.10
Vinyl-2-pyrrolidinone, 1- C ₆ H ₉ NO	9	0.90
Xylene mixed isomers C ₈ H ₁₀	8.56	0.43
Xylene, m- C ₈ H ₁₀	8.56	0.44
Xylene, o- C ₈ H ₁₀	8.56	0.60
Xylene, p- C ₈ H ₁₀	8.44	0.46
Xylidine, all C ₈ H ₁₁ N	7.5	0.70

Software license agreement

IMPORTANT - READ CAREFULLY. THIS IS A LEGAL AGREEMENT BETWEEN YOU AND CROWCON DETECTION INSTRUMENTS FOR THE SOFTWARE PRODUCT YOU ARE INSTALLING WHICH INCLUDES COMPUTER SOFTWARE AND RELATED DOCUMENTATION. BY INSTALLING OR OTHERWISE USING THE SOFTWARE, YOU ACCEPT ALL THE TERMS AND CONDITIONS OF THIS AGREEMENT. IF YOU DO NOT AGREE TO THESE TERMS YOU MAY WITHIN THIRTY (30) DAYS OF PURCHASE RETURN THE UNUSED SOFTWARE PRODUCT TO THE LOCATION WHERE YOU OBTAINED IT FOR A REFUND.

Crowcon Detection Instruments Limited a Halma Group affiliate whose address is 2 Blacklands Way Abingdon Business Park Abingdon Oxfordshire OX14 1DY United Kingdom hereby grants to you a non-exclusive license (a 'License') to use the software product 'Portables-Pro' (the 'Software') and the accompanying printed materials and User Manual (the 'Documentation') on the terms set forth below.

1. GRANT OF LICENSE.

This License grants you the following rights.

Software

Except as set forth below you may use the Software on any single computer (A single computer includes a 'Portable').

Transfer

You may transfer the Software and Documentation to a single recipient on a permanent basis provided you retain no copies of the Software or Documentation (including backup or archival copies) and the recipient agrees to the terms and conditions of this agreement. If the Software is an upgrade any transfer must include all prior versions of the Software and Documentation.

2. DESCRIPTION OF OTHER RIGHTS AND LIMITATIONS.

Reverse Engineering

You may not modify, translate, reverse engineer, decompile, disassemble (except to the extent applicable laws specifically prohibit such restrictions) or create derivative works based on the Software, or any portion thereof.

Copying

You may not copy the Software or Documentation except as specifically provided by this Agreement.

Separation of Components

The Software is licensed as a single product. You may not separate the Software's component parts for use on more than one computer.

Upgrades

If the Software is an upgrade from another product, this upgrade License supersedes any previous License. You may use the Software only in conjunction with the upgraded product, or you must destroy the upgraded product.

Use of Crowcons Name

You may not use Crowcons or Crowcons suppliers' name, logos, or trademarks in any manner including, without limitation, in your advertising or marketing materials, except as is necessary to affix the appropriate copyright notices as required herein.

3. TITLE.

Title, ownership rights, and intellectual property rights in and to the Software and Documentation shall remain in Crowcon and/or its suppliers. The Software and the Documentation is protected by the copyright laws of international copyright treaties.

4. TERMINATION.

The License is in effect until terminated. The License will terminate automatically if you fail to comply with the limitations described herein. On termination, you must destroy all copies of the Software and Documentation.

5. EXPORT CONTROLS.

This Software is subject to the export control laws of the United Kingdom. You may not export or re-export the Software without the appropriate United Kingdom and foreign government licenses. You shall otherwise comply with all applicable export control laws and shall defend, indemnify and hold Company and all Company suppliers harmless from any claims arising out of your violation of such export control laws.

6. MISCELLANEOUS.

This Agreement represents the complete agreement concerning this license between the parties and supersedes all prior agreements and representations between them. This Agreement may be amended only in writing executed by both parties.

THE ACCEPTANCE OF ANY PURCHASE ORDER PLACED BY YOU IS EXPRESSLY MADE CONDITIONAL ON YOUR ASSENT TO THE TERMS SET FORTH HEREIN, AND NOT THOSE CONTAINED IN YOUR PURCHASE ORDER.

If any provision of this Agreement is held to be unenforceable for any reason, such provision shall be reformed only to the extent necessary to make it enforceable and the remainder of this Agreement shall nonetheless remain in full force and effect.

7. LIMITED WARRANTY.

Crowcon warrants that the media containing the Software, if provided by Crowcon, is free from defects in material and workmanship and will so remain for ninety (90) days from the date you acquired the Software. Crowcon's sole liability, and your sole remedy, for any breach of this warranty shall be, in Crowcon's sole discretion: (i) to replace your defective media; or (ii) if the above remedy is impracticable, to refund the License fee you paid for the Software. Replaced Software and Documentation shall be covered by this limited warranty for the period remaining under the warranty that covered the original Software, or if longer, for thirty (30) days after the date of shipment to you of the replaced Software. Only if you inform Crowcon of your problem with the Software during the applicable warranty period and provide evidence of the date you acquired the Software will Crowcon be obligated to honor this warranty. Crowcon will use reasonable commercial efforts to replace or refund pursuant to the foregoing warranty within thirty (30) days of being so notified.

THIS IS A LIMITED WARRANTY AND IT IS THE ONLY WARRANTY MADE BY CROWCON. CROWCON MAKES NO OTHER WARRANTY, REPRESENTATION, OR CONDITION, EXPRESS OR IMPLIED, AND EXPRESSLY DISCLAIMS THE IMPLIED WARRANTIES OF MERCHANTABILITY, FITNESS FOR A PARTICULAR PURPOSE, AND NONINFRINGEMENT OF THIRD PARTY RIGHTS. THE DURATION OF IMPLIED WARRANTIES OR CONDITIONS, INCLUDING WITHOUT LIMITATION, WARRANTIES OR CONDITIONS OF MERCHANTABILITY AND OF FITNESS FOR A PARTICULAR PURPOSE, IS LIMITED TO THE ABOVE LIMITED WARRANTY PERIOD; SOME JURISDICTIONS DO NOT ALLOW LIMITATIONS ON HOW LONG AN IMPLIED WARRANTY OR CONDITION LASTS, SO LIMITATIONS MAY NOT APPLY TO YOU. NO CROWCON AGENT, OR EMPLOYEE IS AUTHORIZED TO MAKE ANY MODIFICATIONS, EXTENSIONS, OR ADDITIONS TO THIS WARRANTY.

If any modifications are made to the Software by you during the warranty period; if the media is subjected to accident, abuse, or improper use; or if you violate the terms of this Agreement, then this warranty shall immediately be terminated. This warranty shall not apply if the Software is used on or in conjunction with hardware or software other than the unmodified version of hardware and software with which the Software was designed to be used as described in the Documentation.

THIS WARRANTY GIVES YOU SPECIFIC LEGAL RIGHTS, AND YOU MAY HAVE OTHER LEGAL RIGHTS THAT VARY BY JURISDICTION.

8. LIMITATION OF LIABILITY.

UNDER NO CIRCUMSTANCES AND UNDER NO LEGAL THEORY, TORT, CONTRACT, OR OTHERWISE, SHALL CROWCON OR ITS SUPPLIERS OR RESELLERS BE LIABLE TO YOU OR ANY OTHER PERSON FOR ANY INDIRECT, SPECIAL, INCIDENTAL, OR CONSEQUENTIAL DAMAGES OF ANY CHARACTER INCLUDING, WITHOUT LIMITATION, DAMAGES FOR LOSS OF GOODWILL, WORK STOPPAGE, COMPUTER FAILURE OR MALFUNCTION, OR ANY AND ALL OTHER COMMERCIAL DAMAGES OR LOSSES, OR FOR ANY DAMAGES IN EXCESS OF CROWCONS LIST PRICE FOR A LICENSE TO THE SOFTWARE AND DOCUMENTATION, EVEN IF CROWCON SHALL HAVE BEEN INFORMED OF THE POSSIBILITY OF SUCH DAMAGES, OR FOR ANY CLAIM BY ANY OTHER PARTY. THIS LIMITATION OF LIABILITY SHALL NOT APPLY TO LIABILITY FOR DEATH OR PERSONAL INJURY TO THE EXTENT APPLICABLE LAW PROHIBITS SUCH LIMITATION. FURTHERMORE, SOME JURISDICTIONS DO NOT ALLOW THE EXCLUSION OR LIMITATION OF INCIDENTAL OR CONSEQUENTIAL DAMAGES, SO THIS LIMITATION AND EXCLUSION MAY NOT APPLY TO YOU.

Crowcon contacts

UK: Crowcon Detection Instruments Ltd, 172 Brook Drive, Milton Park, Abingdon, Oxfordshire OX14 4SD
Tel: +44 (0) 1235 557700
Fax: +44 (0) 1235 557749
Email: sales@crowcon.com

US: Crowcon Detection Instruments Ltd, 1455 Jamike Ave, Suite 100, Erlanger, KY 41018
Tel: +1 859 957 1039 or 1 800 527 6926
Fax: +1 859 957 1044
Email: salesusa@crowcon.com

NL: Crowcon Detection Instruments Ltd, Vlambloem 129, 3068JG, Rotterdam, Netherlands
Tel: +31 10 421 1232
Fax: +31 10 421 0542
Email: eu@crowcon.com

SG: Crowcon Detection Instruments Ltd, Block 194, Pandan Loop, #06-20 Pantech Industrial Complex, Singapore, 128383
Tel: +65 6745 2936
Fax: +65 6745 0467
Email: sales@crowcon.com.sg

CN: Crowcon Detection Instruments Ltd (Beijing), Unit 316, Area 1, Tower B, Chuangxin Building, 12 Hongda North Road, Beijing Economic & Technological Development Area, Beijing, China 100176
Tel: +86 10 6787 0335
Fax: +86 10 6787 4879
Email: saleschina@crowcon.com

www.crowcon.com